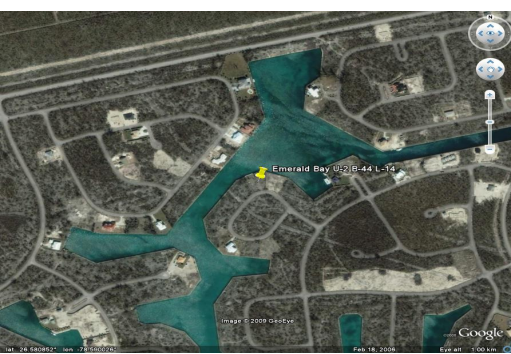
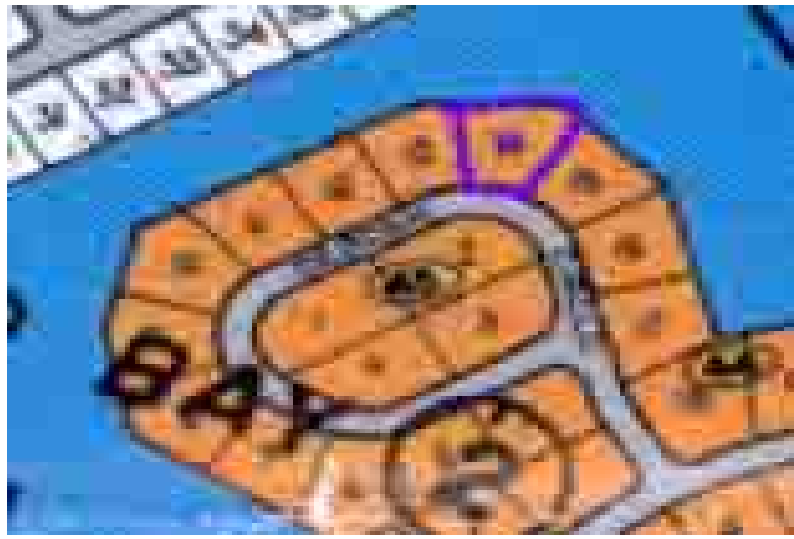


# Emerald Bay Lot 14



**Great Canal Lot with a 150' of gated canal frontage and a good sized dock.**

Great Canal Lot with a gated 150' of canal frontage. The yearly maintenance fees are paid for life. Dock Included....read more on our website.

Lot Size: 20,562.8 sq ft  
Maint. Fees: -  
Subdivision: Emerald Bay  
Features: Canal Front



Nikolai Sarles

Phone: (242)351-9081  
nikolaisarles@gmail.com



**\$200,000 ID# 1214** [View Online](#)  
[www.sarlesrealty.com](http://www.sarlesrealty.com)