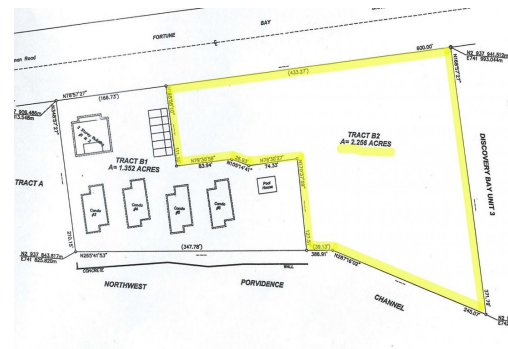
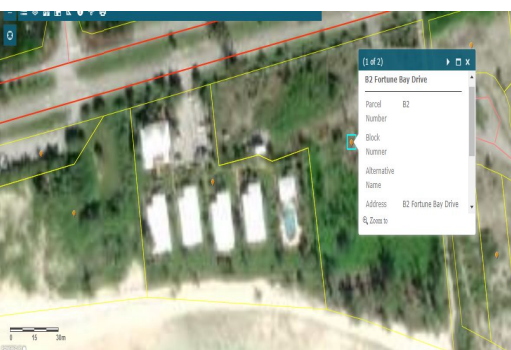
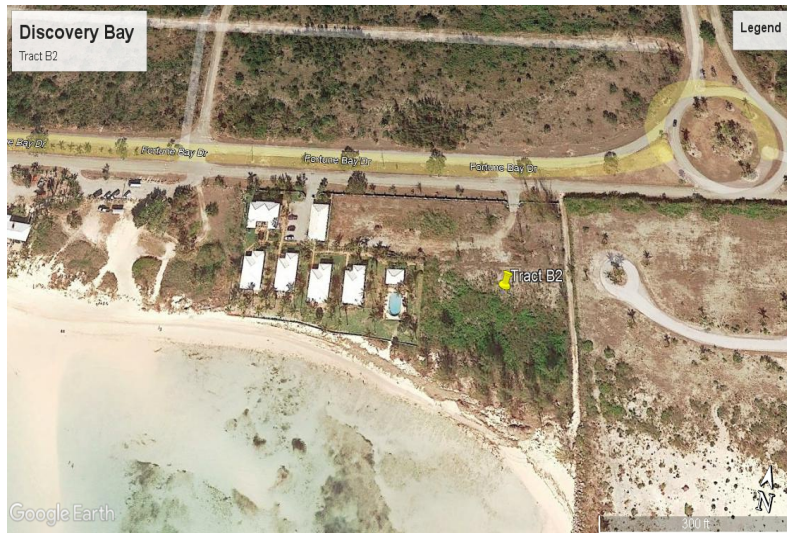


Discovery Bay 3



Investment Opportunity!

Invest in this beautiful beach front tract located on the South shore of the Grand Bahama Island. Situated on Fortune Bay Drive, this property sit on one of our most vibrant power white sandy beaches and is adjacent to Discovery Villas Gated Community and Banana Bay Restaurant.

This tract is measured at two and a quarter acres and boasts 280 feet on the ocean. Zoned tourist commercial this land provides the perfect opportunity to develop an upscale income producing property.

Just a few miles from the downtown area and minutes from the popular Port Lucaya area with exquisite dining and shopping.

...read more on our website.

Lot Size: 2.25 Acres
Maint. Fees: *
Subdivision: Discovery Bay
Features: Ocean front



James Sarles

Phone: (242) 351-9081
jamesarlesrealty@gmail.com



\$0 ID# 1924 [View Online](#)
www.sarlesrealty.com