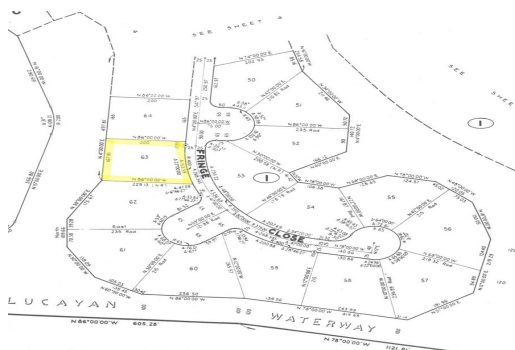
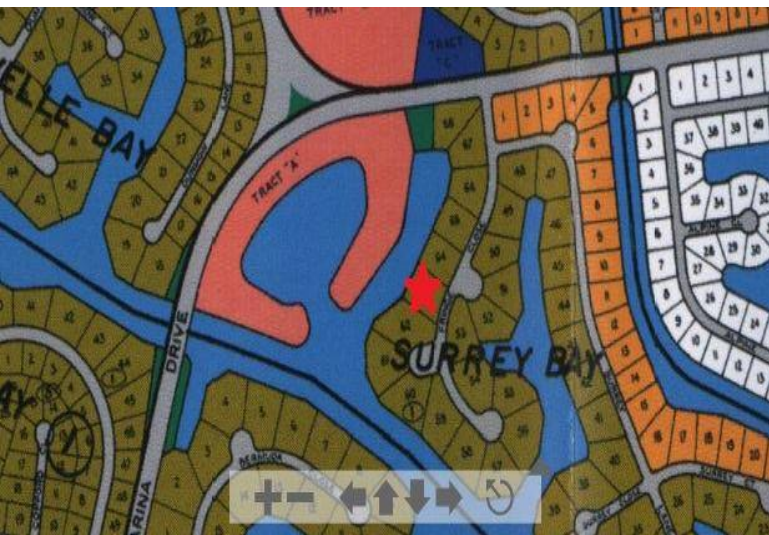


# Surrey Bay Canal Front Land



## Canal Front Property in Surrey Bay

Situated in the desirable Surrey Bay subdivision and boasting superb water views, this estate sized property is perfect for your future home or condominium complex.

Tucked on an inlet just off of the famed Lucayan Waterway near the Casaurina Bridge, enjoy quick and direct access to the north and south of Grand Bahama Island.

Boasting over 168 feet of sturdy concrete sea wall and 35,000 sq. feet, this lot features spectacular views of wide, clear, and deep canal waters. The property's zoning is multi-family hi-rise permitting construction of an apartment building, condominium complex or estate size home.

Full utilities are in place and the lot is elevated and level....read more on our website.

Lot Size: 35,000 sq ft  
Maint. Fees: -  
Subdivision: Surrey Bay  
Features: Canal Front



James Sarles

Phone: (242) 351-9081  
jamesarlesrealty@gmail.com



**\$185,000 ID# 25038** [View Online](#)  
[www.sarlesrealty.com](http://www.sarlesrealty.com)