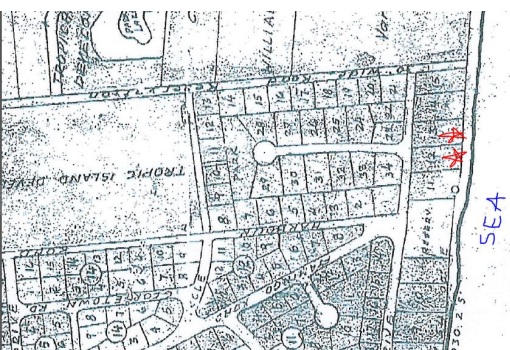
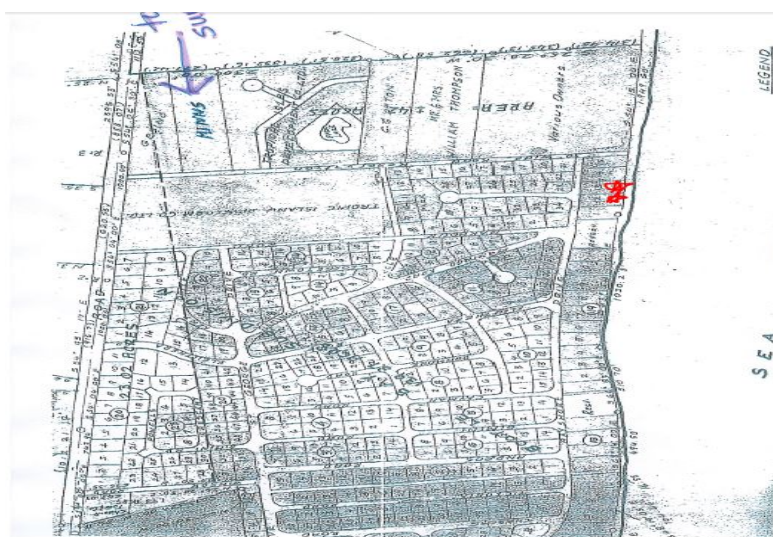
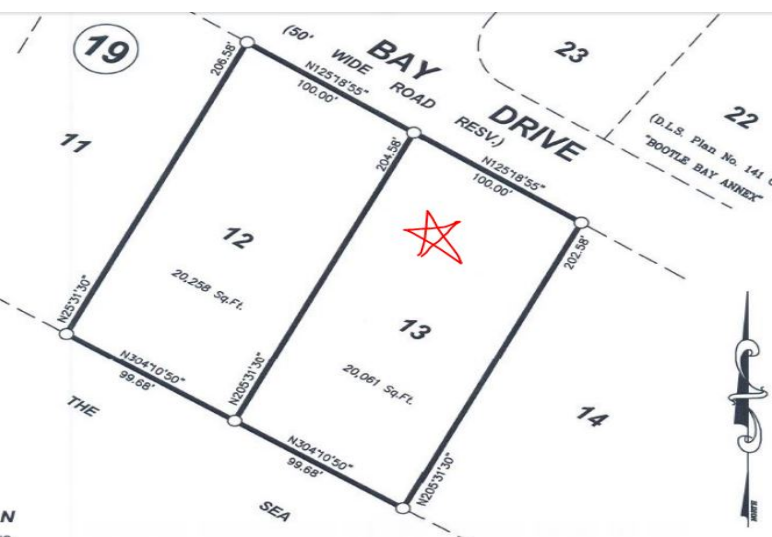


Beautiful Beachfront Land with open Zoning



100' on the Ocean!!! Adjacent lot 12 is available. This land is the perfect place to build your litt

This gorgeous beach front land is available separately or as a pair with the one next door, lot 12. The utilities are in place and there are homes and a restaurant very nearby. Because of OPEN ZONING you can build your private retreat, a beach house just for you and your family or turn it into an income producer and rent it short term to vacationers. A reserve or park area where no one can build is just two lot away. Don't miss this opportunity!...read more on our website.

Lot Size: 20000
 Maint. Fees: *
 Subdivision: West End / West Grand Bahama
 Features: Beach access, Ocean front beachfront in developing area
 adjacent lot available as well
 45 minutes from the airport



Ina Simmons

Phone: (242)351-9081
 inasimmons@gmail.com



\$99,000 ID# 28545 [View Online](#)
www.sarlesrealty.com

Ph: (242) 351-9081 | Web: www.sarlesrealty.com