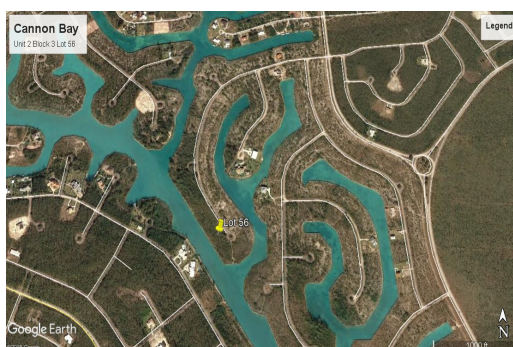
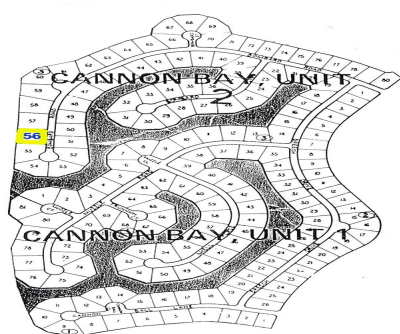
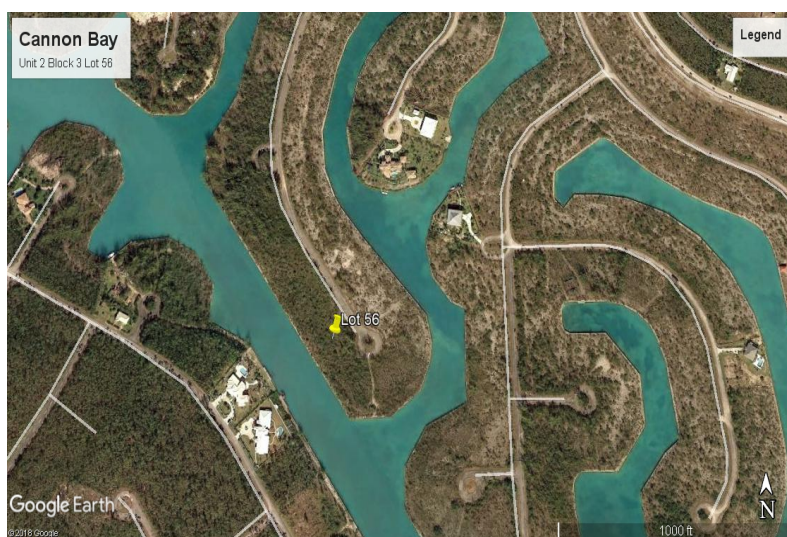
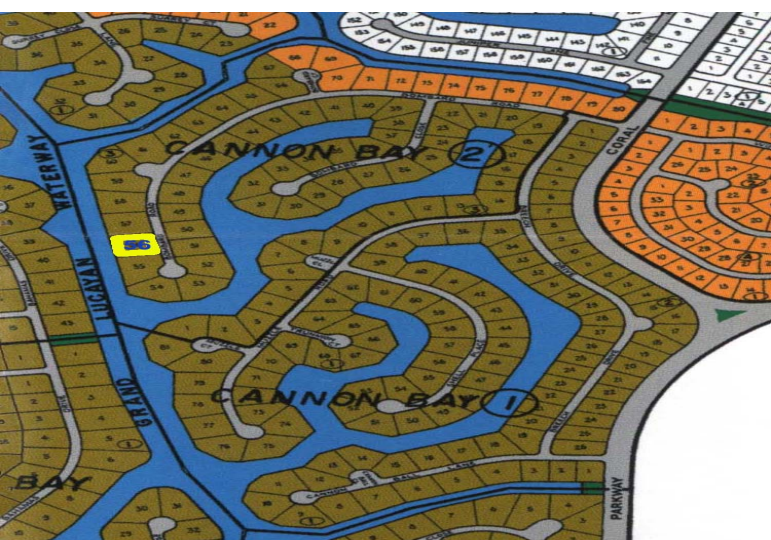


Cannon Bay Waterfront Land



Cannon Bay Waterfront Land

Located in Cannon Bay Subdivision just off of the Grand Lucayan Waterway this waterfront property boasts over 250' of Canal frontage.

This piece of property is situated in an area zoned for multifamily high rise. This area is very quiet and the perfect spot for someone with a boat. Measured a little under an acre this lot presents an excellent opportunity for anyone wishing to build anything from a high end single family home to a small Bed and Breakfast Inn.

...read more on our website.

Lot Size: 43,000 sq ft
Maint. Fees: -
Subdivision: Cannon Bay
Features: Canal Front



Shelly Gardiner

Phone: (242)351-9081
gardinersshelly@gmail.com



\$195,000 ID# 31920 [View Online](#)
www.sarlesrealty.com