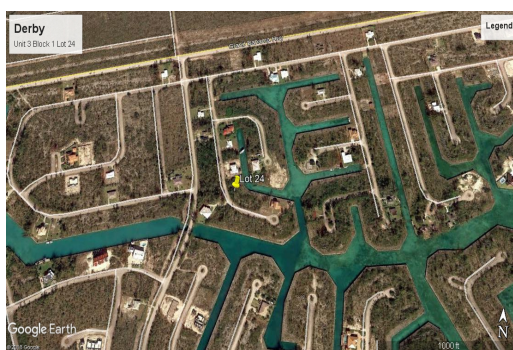
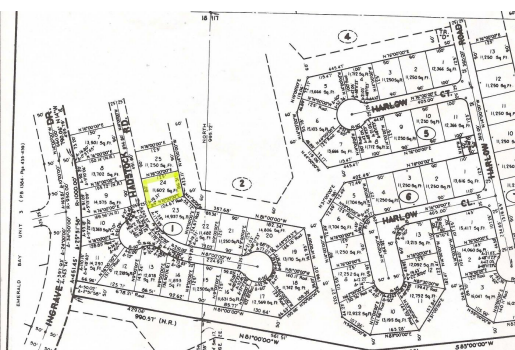
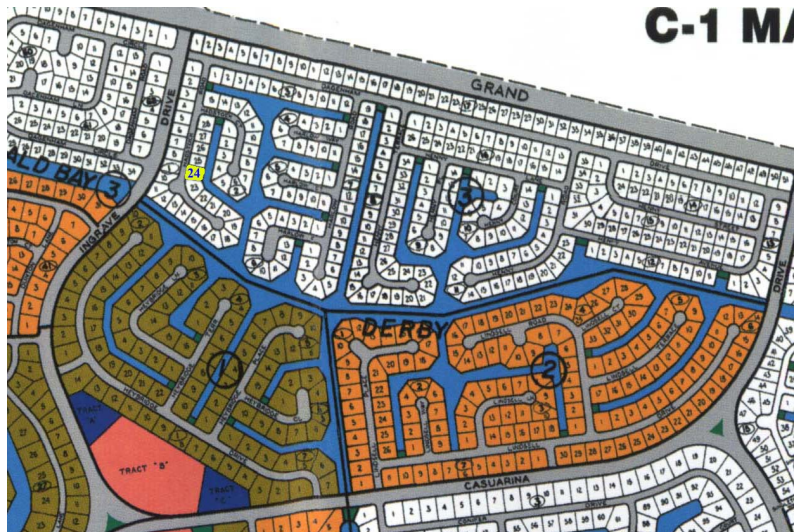


Derby Residential Water Front Lot



Affordable vacant lot, located in the very developed neighborhood of Derby. This lot is approximately 11,602 sqft and is situated on a canal front a great buy for a new and growing family. This property was listed for \$39,000 and has now been reduced to \$32,000! You don't want to pass up on a great deal!...read more on our website.

Lot Size: 11,602 sq ft
Maint. Fees: 130
Subdivision: Derby
Features: Canal Front



James Sarles

Phone: (242) 351-9081
jamesarlesrealty@gmail.com



\$32,000 ID# 33133 [View Online](#)
www.sarlesrealty.com

Ph: (242) 351-9081 | Web: www.sarlesrealty.com