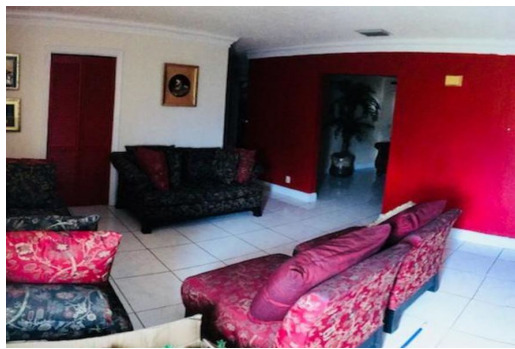


Family home on 13 Suffolk Lane



This charming family home is situated in a quiet neighborhood in Bahamia. 18,000 sq. ft. of land, 2100 sq. ft. of interior space. The residence is nicely appointed and boasts an open Living Room, a family room, another room that could double as children's playroom or a study, a large kitchen, three bedrooms, two and a half baths and a sizable wooden deck which needs some work. Principal rooms are uniformly tiled, and bedrooms have laminate flooring. With Spanish tile roof, fenced back yard and landscaped with young fruit trees, offering a pretty curb appeal, this home has a tremendous potential for an elegant abode. It just needs a little tender love and care, it needs a family! Don't miss out on this opportunity!...read more on our website.

Bedrooms: 3
Bathrooms: 2
Lot Size: 18,000 sq
Living Area: 2100
Maint. Fees: pending
Subdivision: Bahamia
Features: Enclosed Yard,
Furnished, Gated



Ina Simmons

Phone: (242)351-9081
inasimmons@gmail.com



JAMES SARLES
REALTY

\$185,000 ID# 35022 [View Online](#)
www.sarlesrealty.com