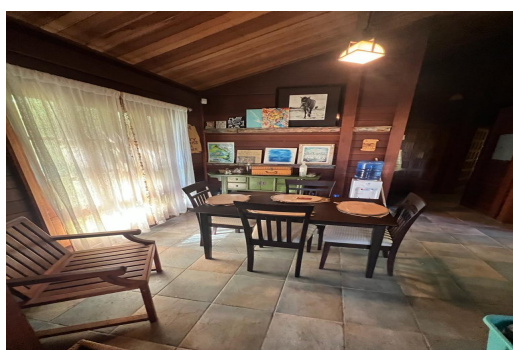


Single Family Home in Whale Point



Single Family Home in Eleuthera

Whale Point Cottage is a charming 2-bedroom, 1-bathroom cottage situated between the serene beach of Bottom Harbour and the rugged cliffs of the Atlantic. The cottage spans 1,528 square feet and sits on a spacious lot of 20,882 square feet, offering potential for construction of a main home or another cottage. The cottage is just a few minutes' walk from the calm waters of Bottom Harbour, which serve as a habitat for various bird species and diverse marine life, including turtles. Nature enthusiasts will enjoy observing and interacting with the local flora and fauna. For those seeking a tranquil setting, the cottage offers options to charter a ferry to Harbour Island or take a short drive to the Glass Window Bridge. North Eleuthera, a 15-minute drive, offers numerous beaches, caves, and ea...read more on our website.

Bedrooms: 2
Bathrooms: 1
Lot Size: 20882
Living Area: 1528
Subdivision: Whale Point
Features: Impact
Windows, Furnished,
Hurricane Windows, None



James Sarles

Phone: (242) 351-9081
info@sarlesrealty.com



\$450,000 ID# 49641 [View Online](#)
www.sarlesrealty.com