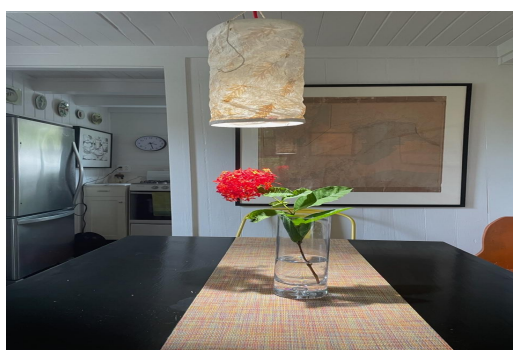
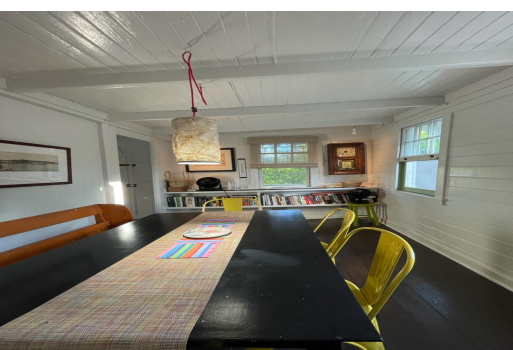


Single Family Home in Current



Single Family Home in Eleuthera

The Current House is a charming historical home in the town of Current, offering three bedrooms and two bathrooms. Located on a lush lot with mature trees, the house has been carefully restored, preserving its historical character while incorporating modern updates. The property features high ceilings, a distinctive feature in traditional historic homes. The owners have maintained the house impeccably, adding a beautiful deck for outdoor relaxation and entertaining. The property also includes an outhouse for storage and convenience. Located on the northern tip of mainland Eleuthera, Current offers a range of activities and attractions, including untouched beaches, water sports, and proximity to nearby islands. The town's rich history and friendly Bahamian residents make it an ideal locatio...read more on our website.

Bedrooms: 3
Bathrooms: 2
Lot Size: 10890
Living Area: 10890
Subdivision: Current
Features: Garden Area,
Wkshop - Detached, Main
Level Entry, Furnished,
Appliances Only



James Sarles

Phone: (242) 351-9081
info@sarlesrealty.com



\$390,000 ID# 49669 [View Online](#)
www.sarlesrealty.com