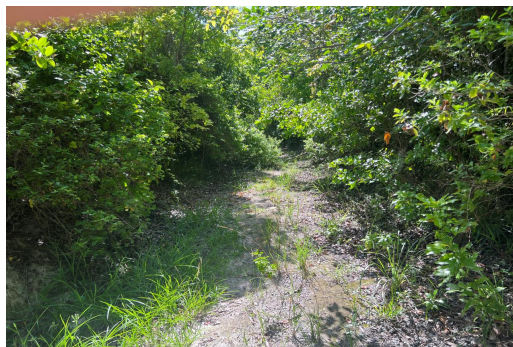


Lots/Acreage in Harbour Island



Lots/Acreage in Eleuthera

Rarely does a large parcel become available in Harbour Island's™s Narrows neighborhood making this lot a true gem that beckons investors with its unparalleled beauty, breathtaking elevations, and residential development potential. Spanning over 4 acres, this expansive property boasts amazing elevations, allowing for views of spectacular sunrises over the ocean, and beautiful sunsets over the Islands Harbor. This Narrows Lot is a short Golf Cart ride to Harbour Islands Pink Sand beach, turquoise waters, and a private environment that is nothing short of luxurious. A fantastic opportunity on Harbour Island awaits the right investor desiring an elevated lot to build a dream home, with room for cottages, swimming pools, tennis courts, and a variety of outbuildings for equipment, storage, and ...read more on our website.

Bedrooms: 0
Bathrooms: 0
Lot Size: 187134
Living Area: 0
Subdivision: Harbour
Island
Features: None



James Sarles

Phone: (242) 351-9081
info@sarlesrealty.com



\$5,000,000 ID# 50050 [View Online](#)
www.sarlesrealty.com