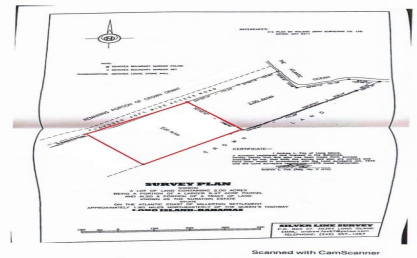
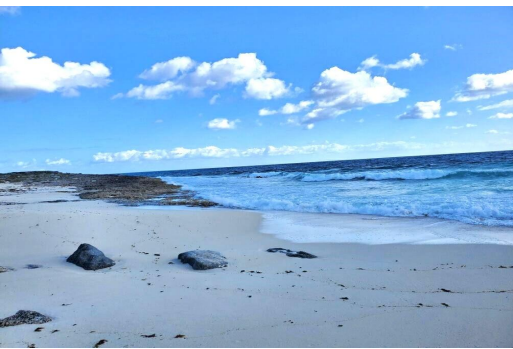


Lots/Acreage in Millertons



Lots/Acreage in Long Island

Beautiful Ocean Views from this two-acre parcel. One can experience unbelievable sunrises and ocean breezes every morning while taking a walk down the beach. Watch the ships go by under the tropical moonlight nights is truly amazing! Completely "off the grid" this property is approximately two miles off of Queen's Highway offering seclusion and privacy which gives you a relaxing feeling of peace and tranquility. Simm's Government dock, Clinic and convenient stores are available at the Queen's Highway....read more on our website.

Bedrooms: 0
Bathrooms: 0
Lot Size: 87120
Living Area: 87120
Subdivision: Millertons
Features: None



James Sarles

Phone: (242) 351-9081

info@sarlesrealty.com



\$275,000 ID# 50444 [View Online](#)
www.sarlesrealty.com