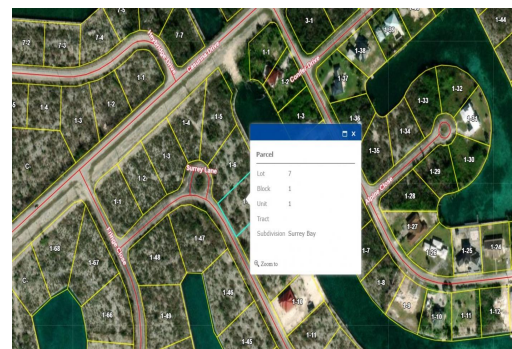
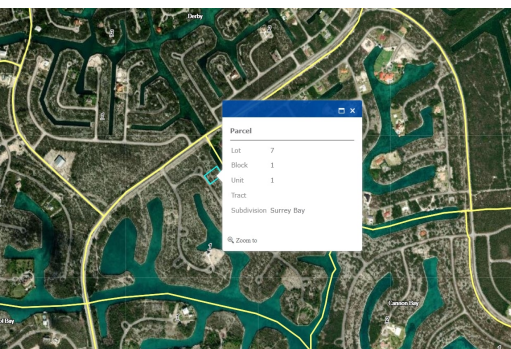


Multi-Family Canal Front Lot



Discover Paradise Living in Surrey Bay, Grand Bahama Island

Introducing a rare opportunity to own your slice of Bahamian paradise in Surrey Bay, Grand Bahama Island. Nestled along the serene canal, this multifamily lot boasts an impressive 126.77 feet of prime waterfront, offering you a life of luxury and relaxation like no other. With 25,468 square feet of pure potential, your dreams of a tropical haven can now become a reality.

With a sprawling 25,468 square feet of land, this multifamily property offers endless possibilities for creating your dream island retreat. Picture yourself building a stunning beachfront villa, a tranquil duplex, or even a charming family compound where you can share the Bahamian dream with loved ones. The choice is yours, and the canvas is vast.

While Surrey Bay offers a tranquil escape from the world, you're never....read more on our website.

Lot Size: 25468
Maint. Fees: -
Subdivision: Surrey Bay
Features: Canal Front
Multi-family
Canal Front
126.77 feet on the canal



James Sarles

Phone: (242) 351-9081
jamesarlesrealty@gmail.com



\$130,000 ID# 50446 [View Online](#)
www.sarlesrealty.com