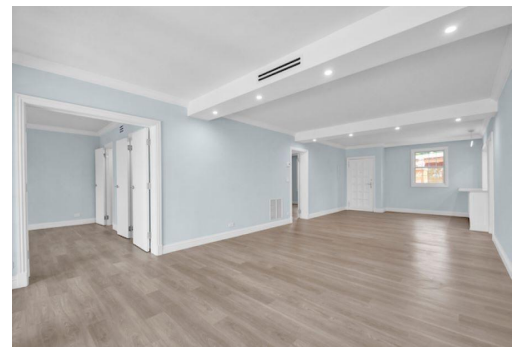
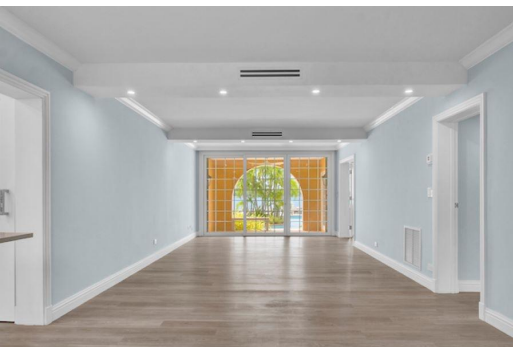


Condo in Paradise Island



Condo in New Providence/Paradise Island

Shangri-La boasts a prime waterfront location on the harbour's edge of Paradise Island. With just 8 luxury apartments, residents cherish a peaceful presence immersed in nature's beauty. No expense has been spared in the total renovation of this stunning 1,500 SF ground floor apartment which enjoys direct access to the swimming pool with palm filled island in its center. The exquisite kitchen is the focal point of the gorgeous condo with quartz counters, Kitchen Aid stainless appliances and wide opening creating a flowing plan that incorporates the kitchen and living areas for breezy island living. While both bedrooms include fitted closets and attractive bathrooms with walk-in showers, the master suite enjoys breathtaking sea views and access to the covered terrace. Special features of thi...read more on our website.

Bedrooms: 2
Bathrooms: 3
Lot Size: 0
Living Area: 1500
Subdivision: Paradise Island
Features: Swimming Pool, Stand-by Generator, Unfurnished, Appliances Only



James Sarles

Phone: (242) 351-9081
info@sarlesrealty.com



\$995,000 ID# 50602 [View Online](#)
www.sarlesrealty.com