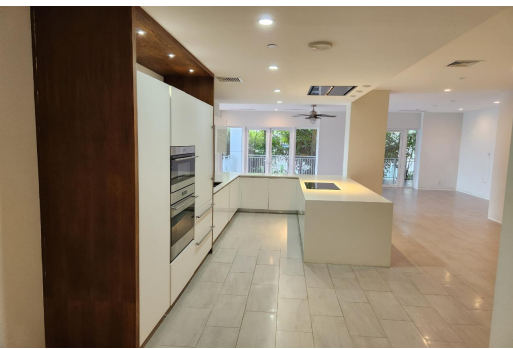


Condo in Paradise Island



Condo in New Providence/Paradise Island

This 2 bed 2.5 bath 2,500 sq ft unit is on the ground floor of the lovely One Ocean Condominium Complex on Paradise Island Drive, just at the entrance to Ocean Club Estates. There is an extra room that can be used as an office or 3rd bedroom. It features spacious open concept living, harbour views, most modern appliances and amenities, laundry room, private elevator access, lots of room for outdoor entertainment and personal relaxation, 24 hour security, in house gym, a back up generator for the complex and much more. Its proximity to conveniences such as Atlantis, marinas, pharmacies, grocery stores, restaurants in both Atlantis and the One and Only Ocean Club, make for a pleasant life experience. It is being sold unfurnished. The unit is also listed for rent....read more on our website.

Bedrooms: 2
Bathrooms: 2
Lot Size: 2500
Living Area: 2500
Subdivision: Paradise Island
Features: Kitchen
Built-in(s), Jetted Bathtub,
Impact Windows, Night
Security, Appliances Only



James Sarles

Phone: (242) 351-9081
info@sarlesrealty.com



\$1,200,000 ID# 50686 [View Online](#)
www.sarlesrealty.com