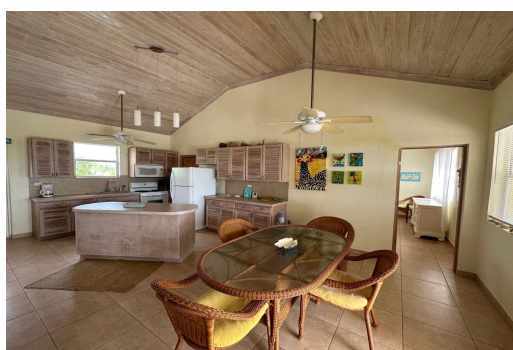


Single Family Home in Rainbow Bay



Single Family Home in Eleuthera

Bonefish cottage is a fantastic investment opportunity located on the ridge in Rainbow Bay, Eleuthera Bahamas, offering amazing sea views of both sides of the island. Enjoy stunning sunrises each morning and spectacular Bahamian sunsets while enjoying your favourite beverage and BBQing on your spacious covered deck which faces the Bight of Eleuthera, commonly referred to as the Caribbean side, being on the lee and having stunning clear turquoise blue waters. This beautifully laid out 2 bedroom 2 bath open floor plan, is just under 1,400 square feet and has a lovely flow to it the home. After stepping inside from a fully covered and tiled 600 square foot front porch with large sliding glass doors, you encounter an open design with large living and dining areas and very spacious and well app...read more on our website.

Bedrooms: 2
Bathrooms: 2
Lot Size: 10980
Living Area: 1957
Subdivision: Rainbow Bay
Features: Impact
Windows, Furnished



James Sarles

Phone: (242) 351-9081

info@sarlesrealty.com



\$450,000 ID# 50946 [View Online](#)
www.sarlesrealty.com