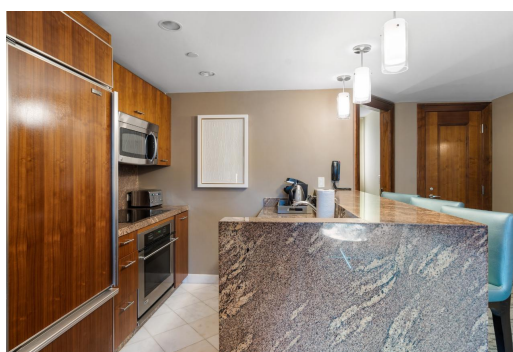
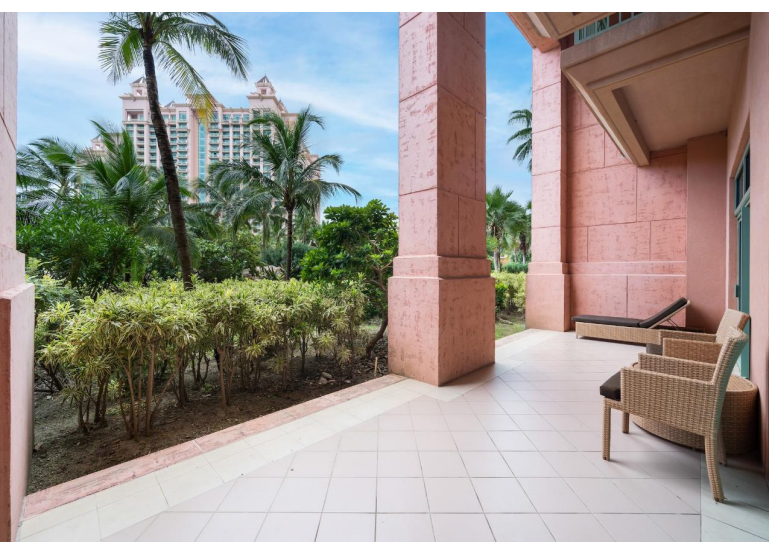


Condo in Paradise Island



Condo in New Providence/Paradise Island

Units 1-922/24 is a tropical lush garden oasis with two bedrooms comprised of three full baths, and a washer & dryer. This unit boasts an extended balcony, an idea for creating fantastic family memories in Paradise. With easy access, Itâ€™s located on the lobby floor with no need for elevators. The Reef Residences at Atlantis is the only building on the beach at Atlantis that offers full kitchens. The Reef now brags of its newly remodel elegant suites, fully furnished, from linens to tableware, and features a wide array of custom interior amenities such as crown molding, granite countertops, and fine European kitchen cabinetry. Owners of The Residence at Atlantis (The Reef) have exclusive access to their own private gym, a Starbucks Cafe conveniently located in the lobby, and an owner's co...read more on our website.

Bedrooms: 2
Bathrooms: 3
Lot Size: 0
Living Area: 1497
Subdivision: Paradise Island
Features: Swimming Pool, Stand-by Generator, 24 Hour Security, Furnished, Hurricane Windows



James Sarles

Phone: (242) 351-9081
info@sarlesrealty.com



\$1.050,000 ID# 51060 [View Online](#)
www.sarlesrealty.com