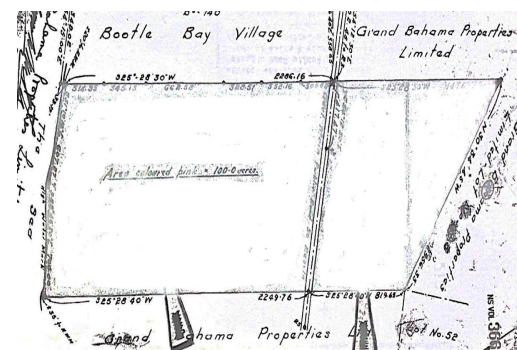
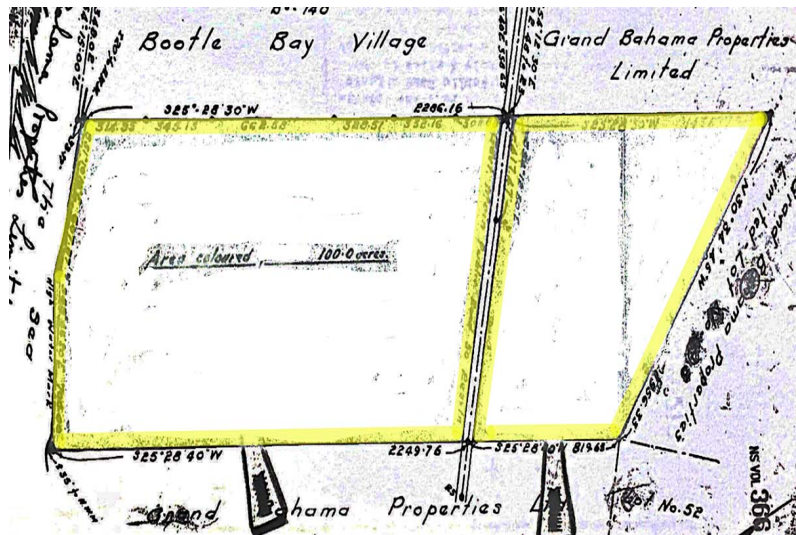
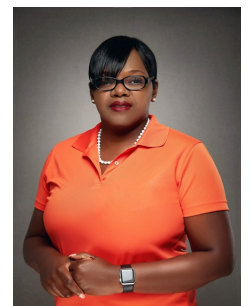


# True East Commercial Land



One hundred (100) Acre Development located on the first tract to the east of Bootle Bay and approximately one mile from the Ginn Sur Mer project....read more on our website.

Lot Size: 100 Acres  
 Maint. Fees: -  
 Subdivision: West End /  
 West Grand Bahama  
 Features: Beach access,  
 Ocean front



Shelly Gardiner  
 Phone: (242)351-9081  
 gardinershelly@gmail.com



**\$10,000,000 ID# 51158** [View Online](#)  
[www.sarlesrealty.com](http://www.sarlesrealty.com)

Ph: (242) 351-9081 | Web: [www.sarlesrealty.com](http://www.sarlesrealty.com)