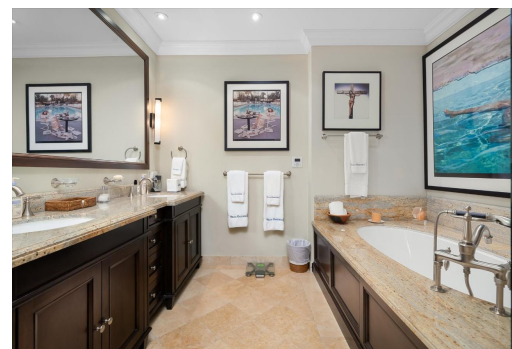


Condo in Paradise Island



Condo in New Providence/Paradise Island

This well-appointed corner residence features an expansive 900 sq. ft. of terrace space overlooking Monatgu Bay. Built to exacting specifications, the interior is finished with elegantly crafted kitchen and bathroom cabinets, top of the line stainless steel appliances, granite and marble slab countertops, hardwood and limestone flooring with mosaic inserts and high tray ceilings. Residents enjoy unparalleled amenities that include a private marina, two on-site swimming pools, a fitness center, on-site concierge, underground parking, an 18-hole Championship golf course, Har-Tru tennis courts, a private beach club set on world famous Cabbage Beach, and VIP access to the facilities at the Atlantis Resort & Casino....read more on our website.

Bedrooms: 3
Bathrooms: 3
Lot Size: 0
Living Area: 3422
Subdivision: Paradise Island
Features: None



James Sarles

Phone: (242) 351-9081

info@sarlesrealty.com



\$2.495,000 ID# 51229 [View Online](#)
www.sarlesrealty.com