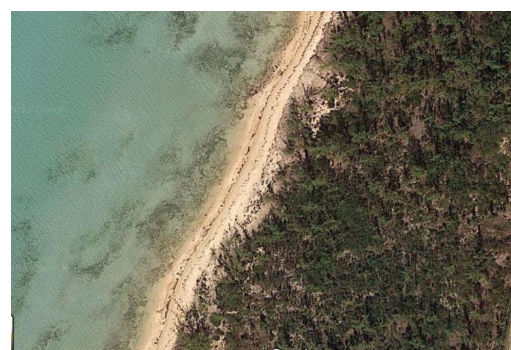
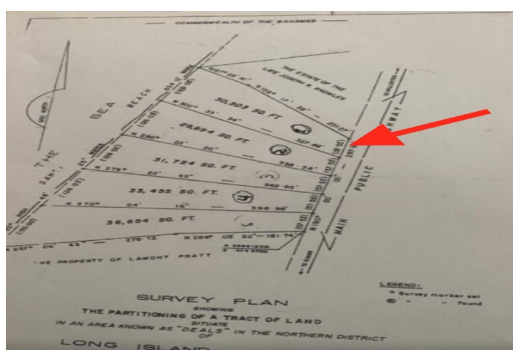
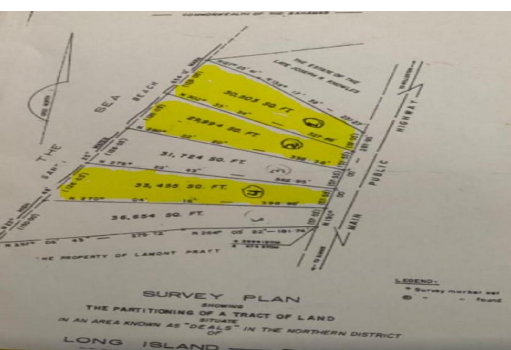
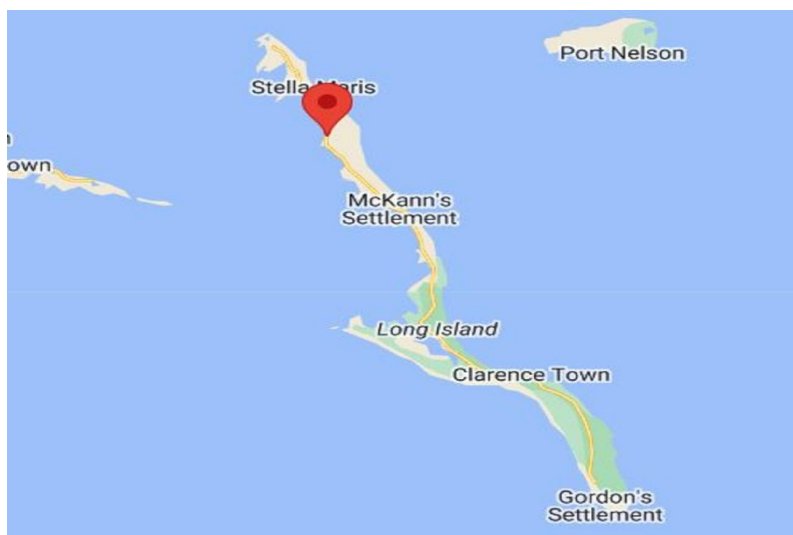
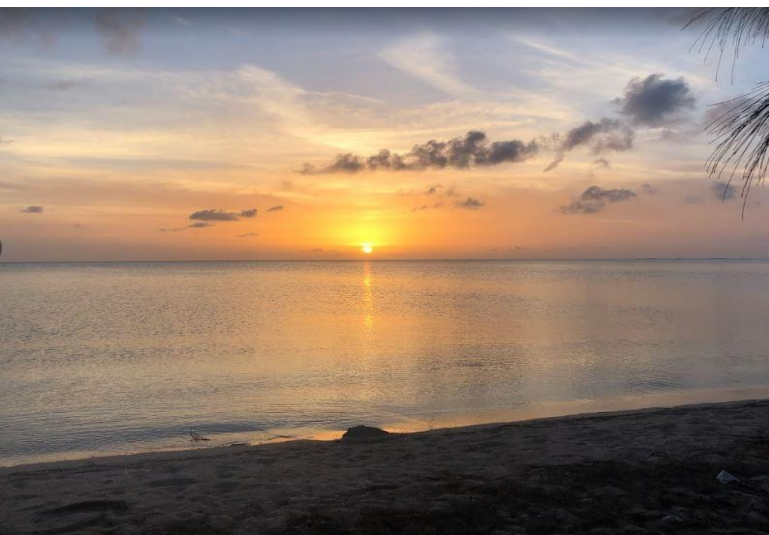


Lots/Acreage in O'Neils



Lots/Acreage in Long Island

Spectacular acreage on the beautiful Caribbean side of Long Island, with 1,200 ft. of white sandy crescent shaped beach stretching for miles. Crystal clear shallow turquoise waters provide excellent anchorage in the sheltered bay for enjoyment of evening sunsets. Lot 1 is less than 100 ft. from the highway and close to a restaurant and bar, medical clinic, grocery stores, hardware stores, liquor stores and service stations, with Cape Santa Maria Beach Resort is only 20 minutes' drive away. The beach is lined with lush green plant life and natural native trees such as natural palms, casuarina, sea grape and many others. As you step into the beautiful water, the sand feels like talc powder, superb for swimming, snorkeling, diving and kayaking. It has a natural reef which protects this amaz...read more on our website.

Bedrooms: 0
Bathrooms: 0
Lot Size: 30503
Living Area: 30503
Subdivision: O'Neils
Features: None



James Sarles

Phone: (242) 351-9081
info@sarlesrealty.com



\$259,000 ID# 51274 [View Online](#)
www.sarlesrealty.com