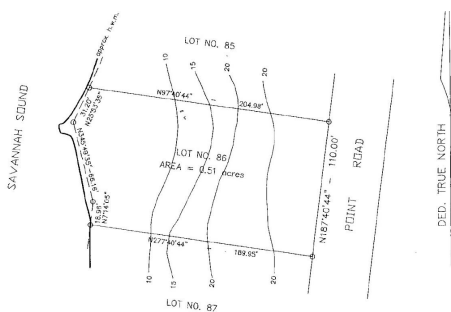
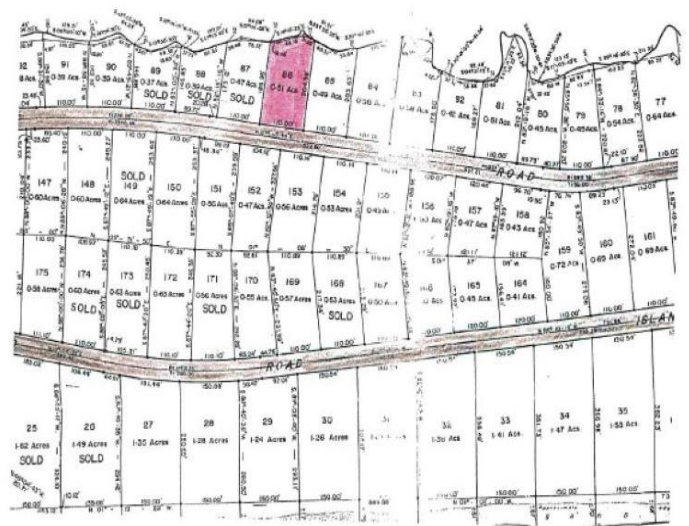


Lots/Acreage in Windermere Island



Lots/Acreage in Eleuthera

Windermere Island once captured the hearts of royalty seeking the pristine beauty, serenity and privacy offered on this private island. Separated from Eleuthera by a bridge with security gate, all residents are assured a peaceful lifestyle in this idyllic Paradise. The private members' club offers tennis courts, a heated swimming pool, fitness room and beach access by day and is the gathering spot for cocktails and dining in the evenings. A magnificent pink sand beach with barely a footprint is accessible via a 100' access reserved for residents. Start the day with a sunrise beach walk, ride a wave or just immerse yourself in the warmth of the sun, caress of the ocean breeze and rhythmic sounds of the sea upon the sand. The leeward side of the island overlooks the tranquility of Savannah S...read more on our website.

Bedrooms: 0
Bathrooms: 0
Lot Size: 22216
Living Area: 22216
Subdivision: Windermere
Island
Features: None



James Sarles

Phone: (242) 351-9081
info@sarlesrealty.com



\$330,000 ID# 51419 [View Online](#)
www.sarlesrealty.com