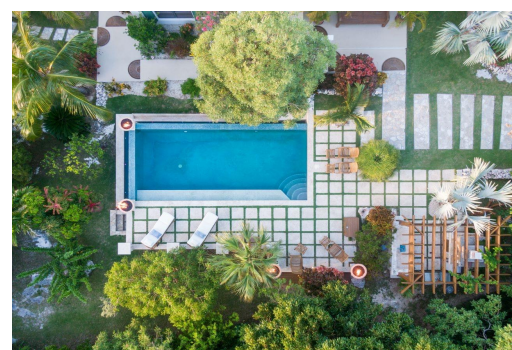
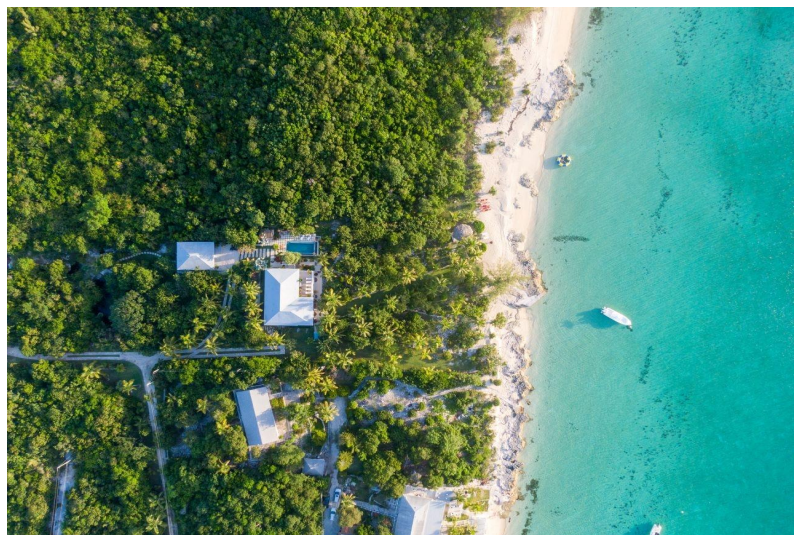
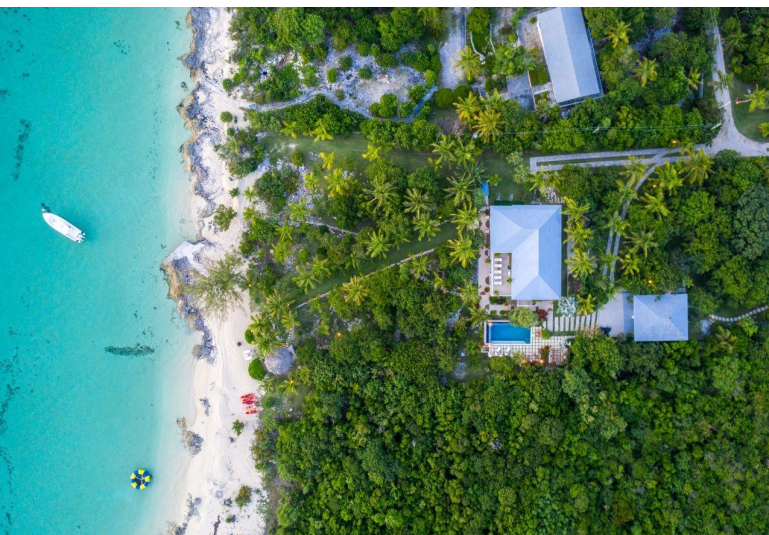


Single Family Home in Current



Single Family Home in Eleuthera

The "Current House" is an exceptional island retreat, tailor-made for those with refined tastes. Nestled on a sprawling 7-acre+ nature preserve, this estate boasts a verdant landscape teeming with native flora, freshwater springs, and serene nature trails. The meticulously manicured grounds feature a natural stone dock that frames a breathtaking powder sand beach, offering a tranquil haven for relaxation and recreation. Perfectly suited for accommodating large families and entertaining guests, the property offers an array of luxurious amenities. An infinity-edge pool beckons for refreshing dips, while a surround sound home theater provides an immersive entertainment experience. Outdoor culinary adventures await with an expansive kitchen equipped with a wood-burning pizza oven, ideal for al...read more on our website.

Bedrooms: 5
Bathrooms: 4
Lot Size: 348480
Living Area: 4200
Subdivision: Current
Features: Security System, Garden Area, Wkshop - Detached, Swimming Pool, Water Softener, Water Purifier, Sprinkler System, Impact Windows, Impact Shutters, Cable, Stand-by Generator, Hurricane Windows



James Sarles

Phone: (242) 351-9081
info@sarlesrealty.com



\$5,500,000 ID# 52280 [View Online](#)
www.sarlesrealty.com