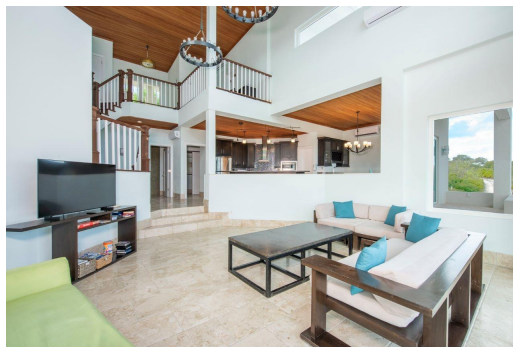


# Single Family Home in Governor's Harbour



## Single Family Home in Eleuthera

This spacious, contemporary designed home features 4 bedrooms with 4 and a half bathrooms and is two stories offering 3,500 of square footage of living space. The home sits on lot 29, with 10,000 square feet of elevated hilltop land with expansive views of the ocean from every room. The home offers a lovely open floor plan with the great room overlooking the stunning ocean on the Atlantic side of the island of Eleuthera, the Jewel of The Bahamas. Large hurricane impact resistant doors open up to a spacious back patio, offering unobstructed views of the azure waters of The Bahamian sea. The kitchen is dark wood with stainless appliances and very spacious, perfect for the discerning chef in the family. Other amenities of this home are air conditioning throughout, lots of windows all...read more on our website.

Bedrooms: 4  
Bathrooms: 4  
Lot Size: 10000  
Living Area: 3500  
Subdivision: Governor's Harbour  
Features: Swimming Pool, Jetted Bathtub, Impact Windows, Hurricane Windows



James Sarles

Phone: (242) 351-9081  
info@sarlesrealty.com



**\$1.350,000 ID# 52323** [View Online](#)  
[www.sarlesrealty.com](http://www.sarlesrealty.com)