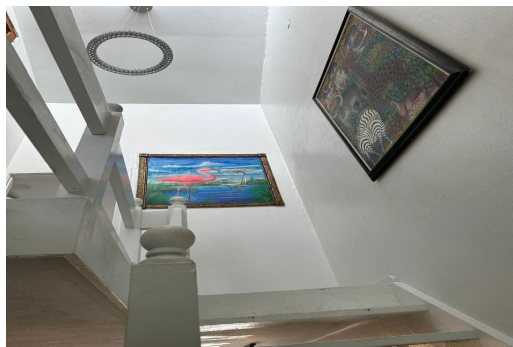
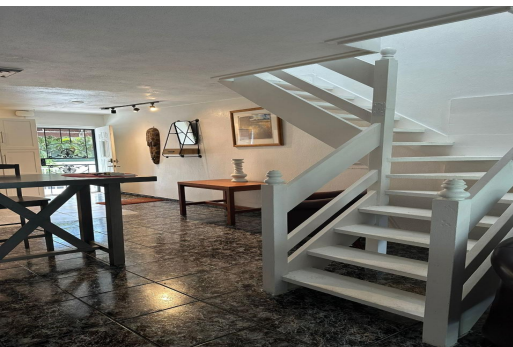


Condo in Other New Providence/Nassau



Condo in New Providence/Paradise Island

A 2 bed 1 bath pool view townhouse on Paradise Island at Suffolk House. It is in walking distance or a short drive to Atlantis, The One and Only Ocean Club, The Cloisters, Paradise Island Golf course and Marin and local restaurants. It is an excellent investment opportunity or very nice home. Make it your investment of choice today. Current HOA fees are \$130.00/month Central air in the unit and a split level a/c downstairs....read more on our website.

Bedrooms: 2
Bathrooms: 1
Lot Size: 0
Living Area: 1348
Subdivision: Paradise Island
Features: Swimming Pool, Kitchen Built-in(s), Fully Walled, Cable, Furnished, Short Term Allowed



James Sarles

Phone: (242) 351-9081
info@sarlesrealty.com



\$420,000 ID# 52557 [View Online](#)
www.sarlesrealty.com