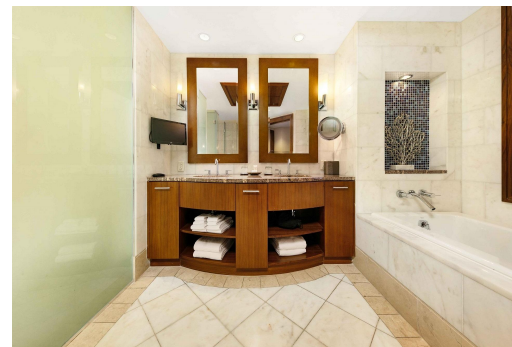
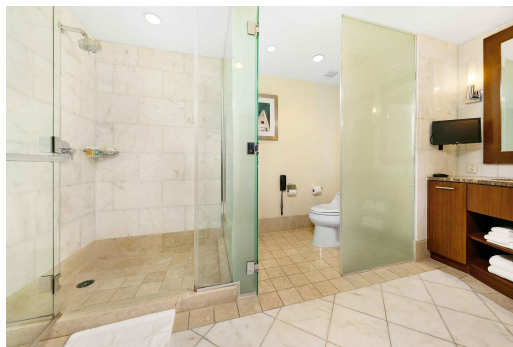
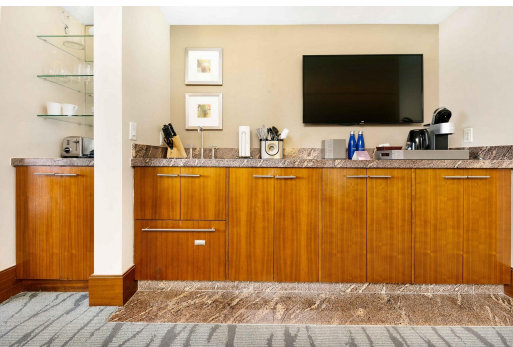


# Condo in Paradise Island



## Condo in New Providence/Paradise Island

Situated on the third floor at The Reef at Atlantis, unit 3924 is a beautiful studio suite encompassing 523 sq. ft. This unit is located in the northern portion of the building with views overlooking the resort and white sandy beach. Owners have exclusive access to their own private gym, Starbucks Cafe conveniently located in the lobby, an owner's concierge team, Aquaventure, Mandara Spa, Cain Pool and Beach Club, an array of restaurants, Casino, Dolphin Cay and much more. The studio suites are the most sought out units at The Reef due to their high return on investment....read more on our website.

Bedrooms: 1  
Bathrooms: 1  
Lot Size: 523  
Living Area: 523  
Subdivision: Paradise Island  
Features: Swimming Pool, Impact Windows, Stand-by Generator, 24 Hour Security, Furnished



James Sarles

Phone: (242) 351-9081  
info@sarlesrealty.com



**\$425,000 ID# 52641** [View Online](#)  
[www.sarlesrealty.com](http://www.sarlesrealty.com)