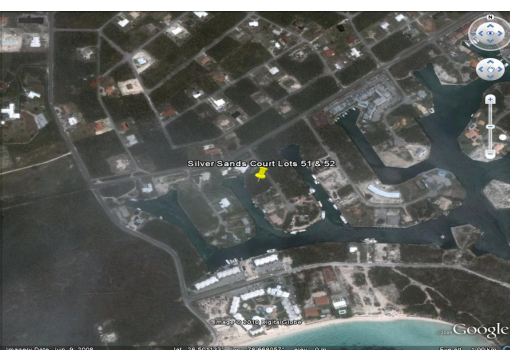
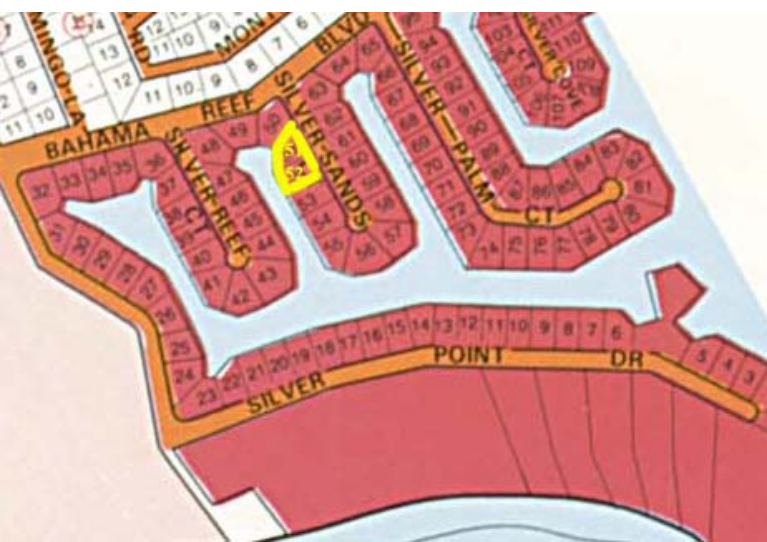


Silver Cove Lot



These canal lots are located in the popular and highly sought after Silver Cove subdivision. Together, these lots offer approximately 190½ of canal frontage and are zoned Tourist Commercial. These lots are centrally located and just minutes away from the Grand Bahama Domestic & International airports and are in walking distance to several beautiful pristine beaches. The Port Lucaya Marketplace with marina & casino,

Downtown Freeport, the financial district and Supreme and Magistrates courts are all no more than a 10 minute drive away. Together these lots measure over 38,000 square feet and zoning for these lots allows for the development of anything from a simple home to small resort, villas, restaurants, or a grand multi-family income producing complex. Ideally this property has endl...read more on our website.

Lot Size: 38,316 sq ft
Maint. Fees: -
Subdivision: Silver Cove
Features: Canal Front



James Sarles

Phone: (242) 351-9081
jamesarlesrealty@gmail.com



\$369,000 ID# 5533 [View Online](#)
www.sarlesrealty.com

Ph: (242) 351-9081 | Web: www.sarlesrealty.com