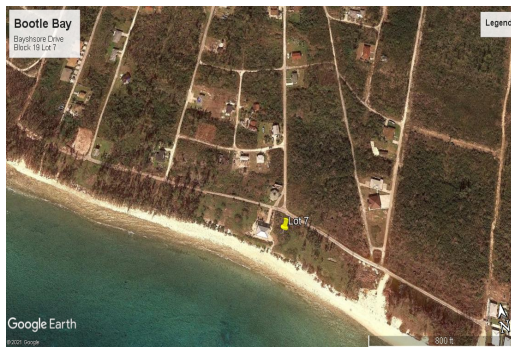
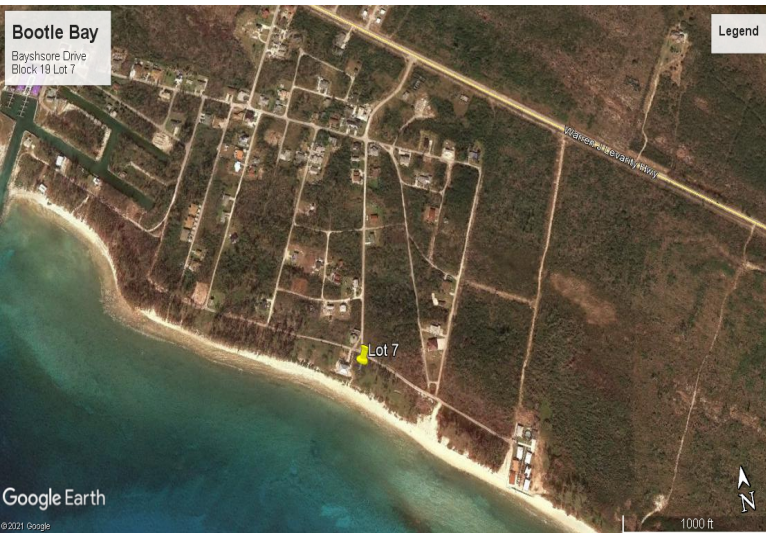


# Bootle Bay Beachfront Land



**Located along the shoreline in Bootle Bay, this beach front lot is ripe for development. Utilities**

...read more on our website.

Lot Size: 20,400sqft  
Maint. Fees: -  
Subdivision: West End /  
West Grand Bahama  
Features: Beach access,  
Ocean front  
ocean front lot  
slowly developing area  
utilities in the area



James Sarles

Phone: (242) 351-9081

jamesarlesrealty@gmail.com



**\$165,000 ID# 5574 View Online**  
**[www.sarlesrealty.com](http://www.sarlesrealty.com)**

Ph: (242) 351-9081 | Web: [www.sarlesrealty.com](http://www.sarlesrealty.com)