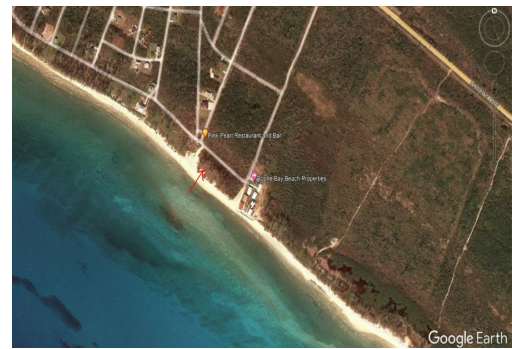


# Amazing Bootle Bay Beachfront Land



**100 linear feet on the Ocean!!! This is the perfect place to build your little piece of heaven. Or a**

This beachfront lot in Bootle Bay local community fronts a gorgeous white sand beach. There are low and high spots so some fill may be needed before building. The utilities are in place and there are homes and a restaurant very nearby. Because of OPEN ZONING you can build your private retreat, a beach house just for you and your family or turn it into an income producer and rent it short term to vacationers. A reserve or park area where no one can build is just one lot away. Don't miss this opportunity....read more on our website.

Bedrooms: Multi Family  
Estate  
Bathrooms: 1  
Lot Size: 20000  
Maint. Fees: Property tax  
\$1,805/ annually  
Subdivision: West End /  
West Grand Bahama  
Features: Beach access,  
Ocean front  
beach front in developing  
area  
Open zoning  
45 minutes from the airport



Ina Simmons

Phone: (242)351-9081  
inasimmons@gmail.com



**\$165,000 ID# 5583 [View Online](#)**  
**[www.sarlesrealty.com](http://www.sarlesrealty.com)**