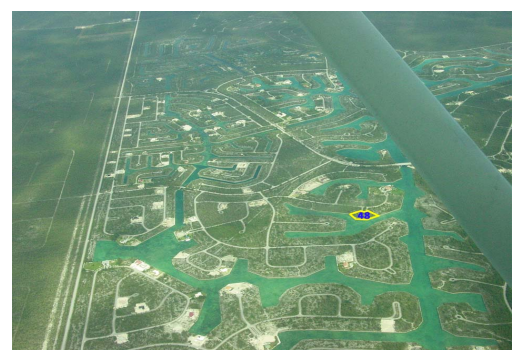
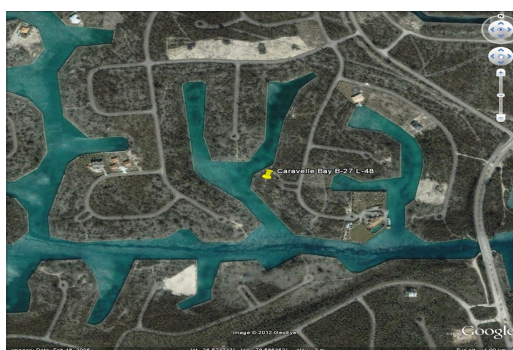
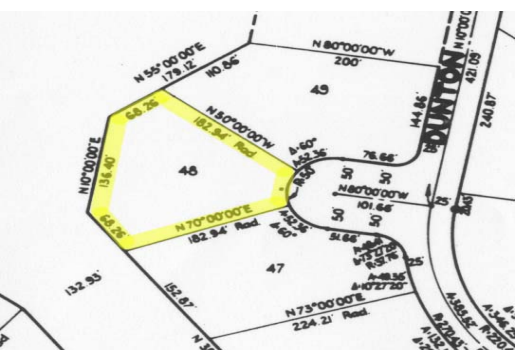
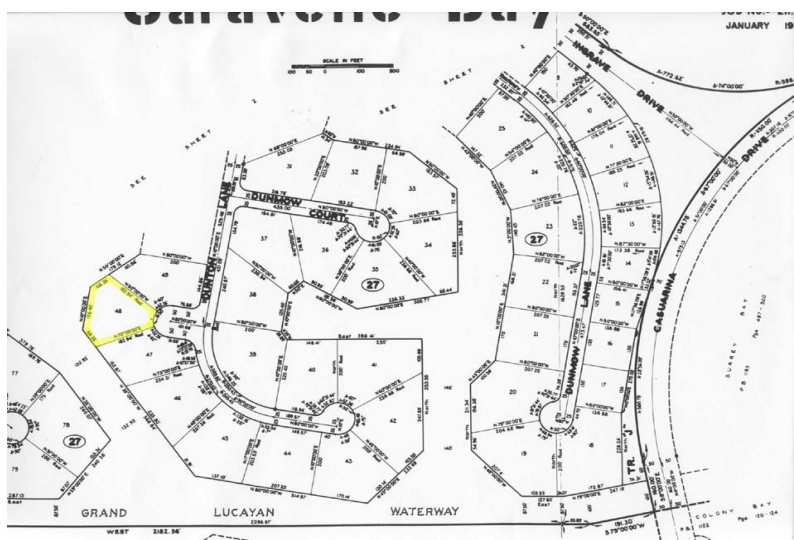
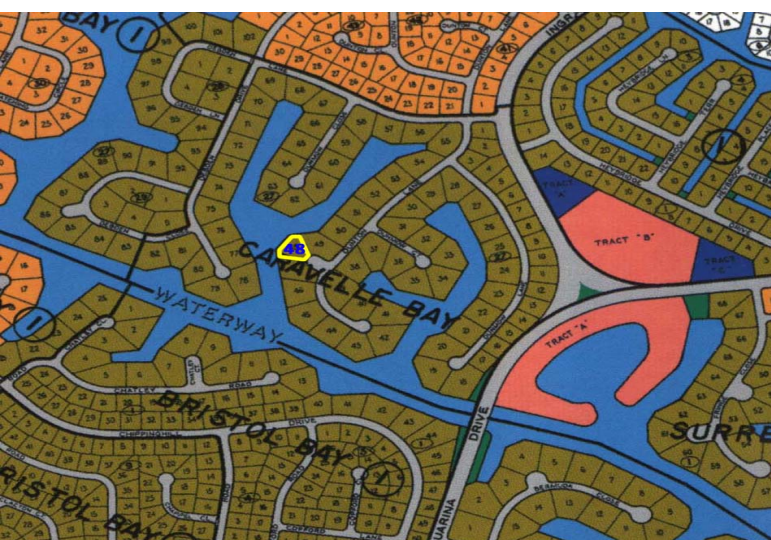


Waterfront Property on Grand Bahama Island located in Carvelle



Waterfront Property - Great Investment!

Waterfront Property for sale on Grand Bahama Island located in the popular Caravelle Bay Subdivision. This lot is situated in Caravelle Bay on Dunton Lane over the Casuarina Bridge just off of Ingrave Drive. This property is very large measuring just under an acre at 31,100 square feet and boasts over 270 feet on the canal. A Boater's Dream! This lot has a fantastic view of the Grand Lucayan Waterway as it sticks out at an angle off of a cul-de-sac. This property has great potential and would make a sound investment. Ideal for large multi family complex or a very large single family estate this property is A Great Buy!

The area is not more than a fifteen minute drive to downtown Freeport, the Grand Bahama International airport and other amenities.

...read more on our website.

Lot Size: 31,100 sq ft or
0.71 Acre
Maint. Fees: *
Subdivision: Caravelle Bay
Features: Canal Front
273' of Water frontage



James Sarles

Phone: (242) 351-9081
jamesarlesrealty@gmail.com



\$425,000 ID# 6932 [View Online](#)
www.sarlesrealty.com

Ph: (242) 351-9081 | Web: www.sarlesrealty.com