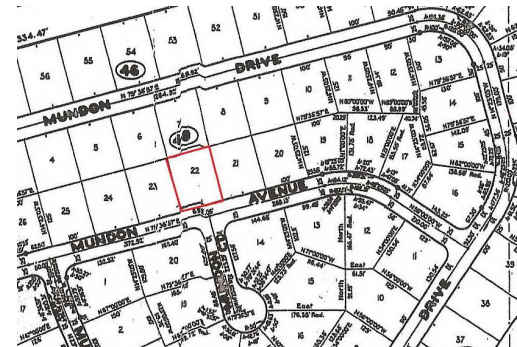
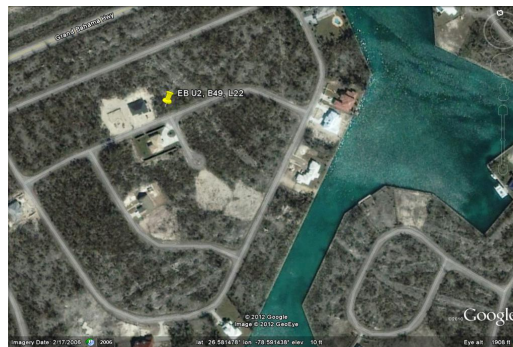


Emerald Bay Vacant Land



Great deal in quiet area!

This Emerald Bay single family lot is situated just over the Casuarina Bridge and is located on Mundon Avenue. Emerald Bay is a very quiet neighborhood, consisting of moderately sized homes perfect for raising a family. This subdivision is just a few minutes away from Port Lucaya Marketplace, the International Airport and the College of the Bahamas.....read more on our website.

Lot Size: 125 x 100
Maint. Fees: \$450/year
Subdivision: Emerald Bay
Utilities in place



James Sarles

Phone: (242) 351-9081
jamesarlesrealty@gmail.com



\$25,000 ID# 7210 View Online
www.sarlesrealty.com