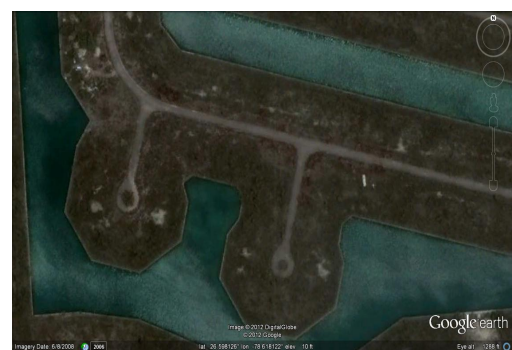
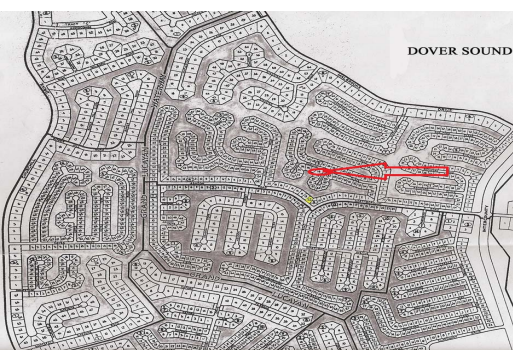
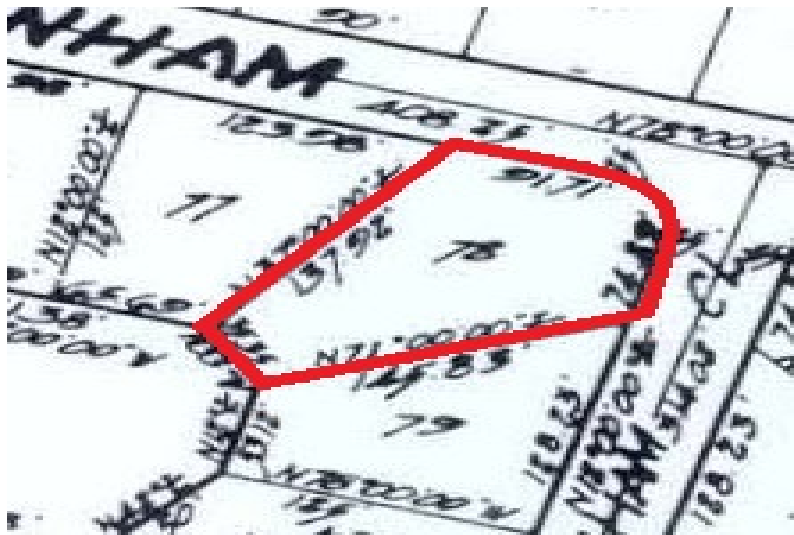
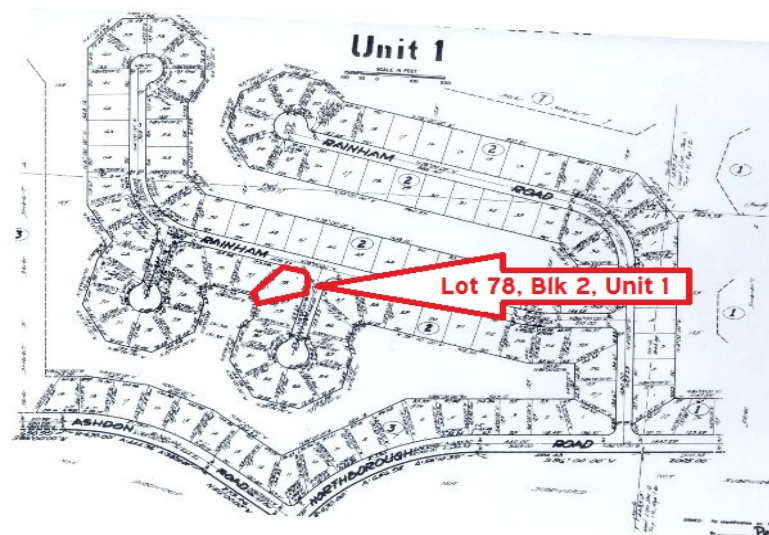


# Dover Sound Canal Lot



## Corner Dover Sound Lot

This Corner lot in Dover Sound has 36' on the canal and offers a water view, and low annual Service Charge fees.  
...read more on our website.

Lot Size: 13,716 sq ft  
Maint. Fees: \$ 130 Per Year  
Subdivision: Dover Sound  
Features: Canal Front  
Corner Lot  
Water View



Dwayne King

Phone: (242)351-9081  
dwaynekingsales@gmail.com



**\$30,000 ID# 7374** [View Online](#)  
[www.sarlesrealty.com](http://www.sarlesrealty.com)