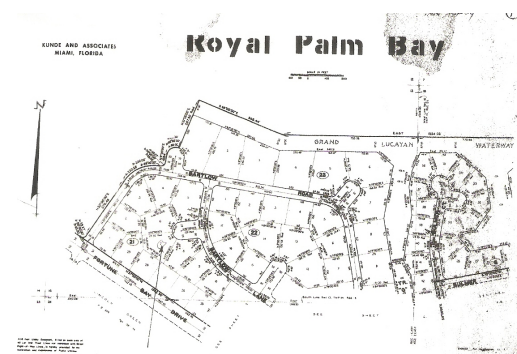
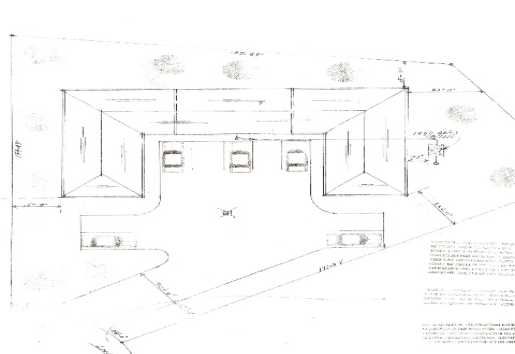
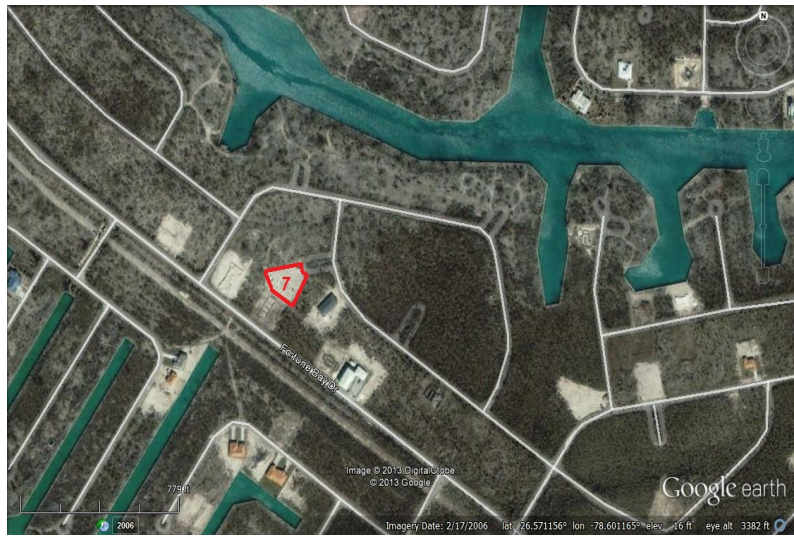
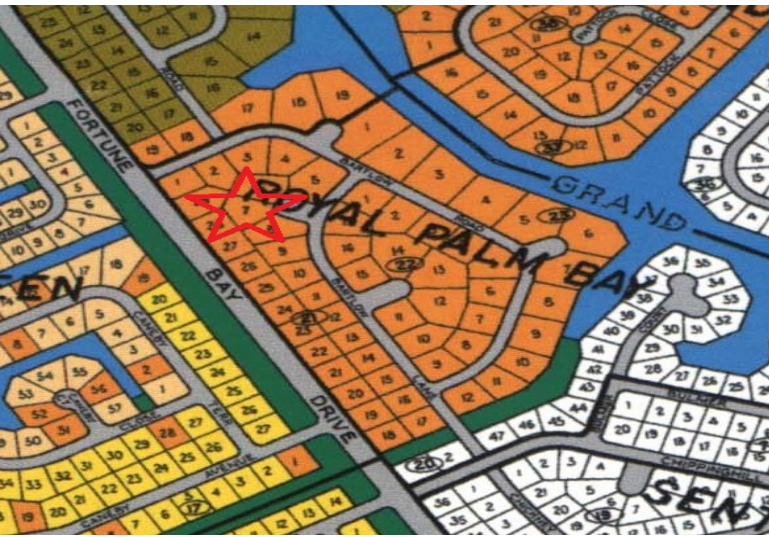


Five Plex Started in Royal Palm Bay



5 Plex Building Started on a Large Multi-family Lot

This large and well thought out 5 plex has approved plans and the foundation out of the ground. All of the units are 2 bedroom and 2 bathrooms. This is a great project to take over to have a wonderful income property. ...read more on our website.

Bedrooms: 10
Bathrooms: 10
Lot Size: 21,349 sq ft
Maint. Fees: \$ 160 Per month
Subdivision: Royal Palm Bay
Under Construction
5 - 2 bedroom Units
Tastefully Designed



Ina Simmons

Phone: (242)351-9081
inasimmons@gmail.com



\$78,000 ID# 7996 [View Online](#)
www.sarlesrealty.com

Ph: (242) 351-9081 | Web: www.sarlesrealty.com