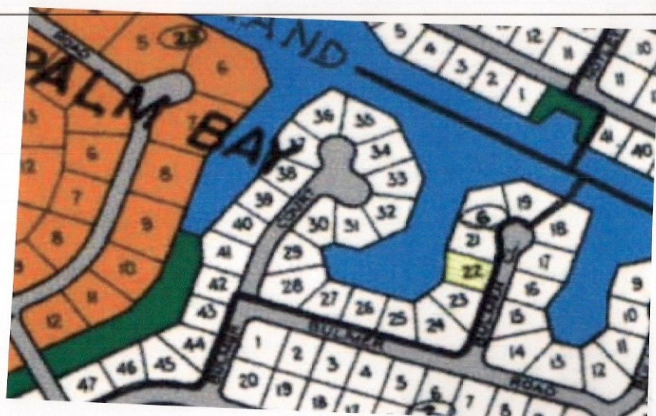
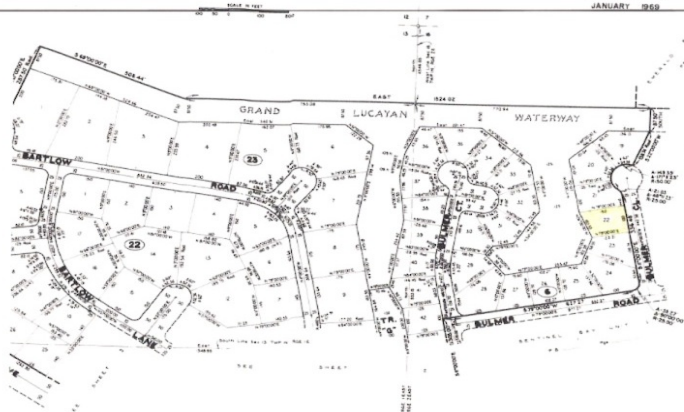


Single Family on the Waterway



ROYAL PALM BAY

JOB No. 21184
JANUARY 1988



REDUCED SEPTEMBER 2014! Waterfront with ocean access.

This Canal front property just off the Grand Lucayan Waterway with access to the ocean on both sides of the island. Located on a large turning basin this lovely single family lot presents the most dazzling water views and a feeling of openness. Gentle breezes evoke a majestic island feel.

...read more on our website.

Lot Size: 14,000 sq ft
Maint. Fees: \$
Subdivision: Royal Palm Bay
Features: Canal Front



James Sarles

Phone: (242) 351-9081

jamesarlesrealty@gmail.com



\$85,000 ID# 8044 [View Online](#)
www.sarlesrealty.com

Ph: (242) 351-9081 | Web: www.sarlesrealty.com