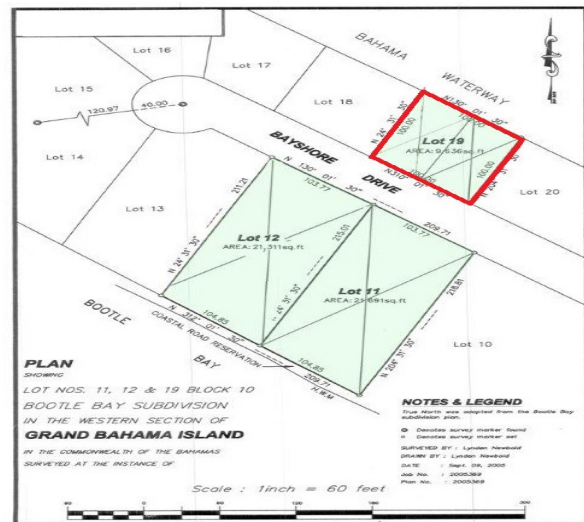


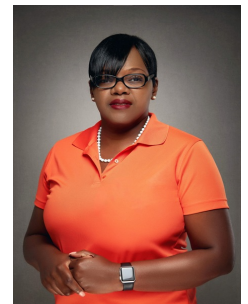
# Bootle Bay - Bahama Shores Canal / Boat House



## Boaters dream house with all the equipment needed for worry free boating trips in Grand Bahama.

This 10,000 Sq. Ft. canal lot has a guest house of 1500 Sq. Ft., that consists of a very large garage for boating equipment and freezers, as well as boat house kitchen facilities including an ice maker. There is a full bedroom and bathroom overlooking the canal. The house is equip with a 5 ton air conditioner for constant temperature comfort all year round. Also, there is the high attic that can be storage or potentially additional rooms and a 25K generator. The lot has a concrete poured 100 foot sea wall and gradual boat ramp for easy and convenient boat launching and pull up; not to mention a 10,000lb boat lift. The foundation of this building is 18" deep cut into rock and is fully concrete poured. This Boat House is a fisherman's dream come true. This can combined with beach front a...read more on our website.

Bedrooms: 1  
Bathrooms: 1  
Lot Size: 10,000 sq ft  
Living Area: 1500  
Maint. Fees: Requested  
Subdivision: West End /  
West Grand Bahama  
Features: Canal Front,  
Dock, Furnished  
Poured Sea Wall  
Gradual Boat Ramp  
Beach Front Adjacent  
Available



Shelly Gardiner

Phone: (242)351-9081  
gardinershelly@gmail.com



**\$600,000 ID# 8091** [View Online](#)  
[www.sarlesrealty.com](http://www.sarlesrealty.com)