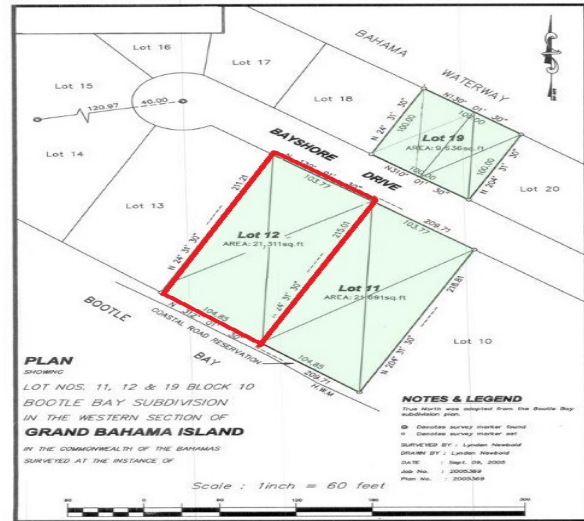


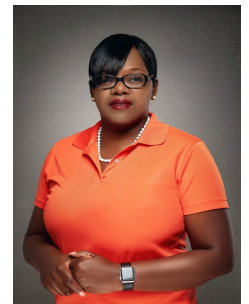
# Bahama Shores Beach House



## 104 Feet of Beachfront with a one of a kind view.

Located on a large beach lot, this house has a bit of finishing to be done to make it your own taste and style. 1800 sq. feet under roof with a magnificent water view. The building consists of one bedroom and bathroom and a large recreation room (living and dining area) with space for a full kitchen. The lot offers 104 feet on the beach front with ample space for more development. This can combined with canal front across the street to make a dream come true beach and canal estate (see listing # 8094). This property is located adjacent to Bootle Bay and the Ginn Development, as well as near the Old Bahama Bay Marina. ...read more on our website.

Bedrooms: 1  
Bathrooms: 2  
Lot Size: 22360  
Living Area: 1800  
Maint. Fees: Requested  
Subdivision: West End /  
West Grand Bahama  
Features: Beach access,  
Ocean front  
House on the Beach  
Extra land for more  
development  
Magnificent View



Shelly Gardiner

Phone: (242)351-9081  
gardinershelly@gmail.com



**\$500,000 ID# 8092** [View Online](#)  
[www.sarlesrealty.com](http://www.sarlesrealty.com)