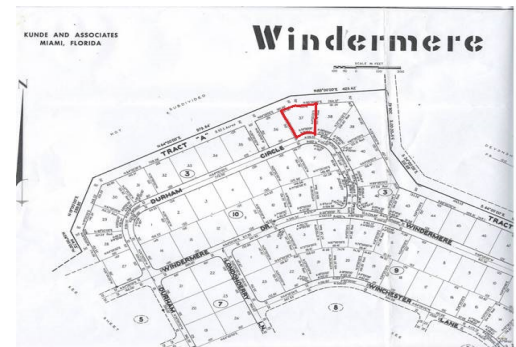
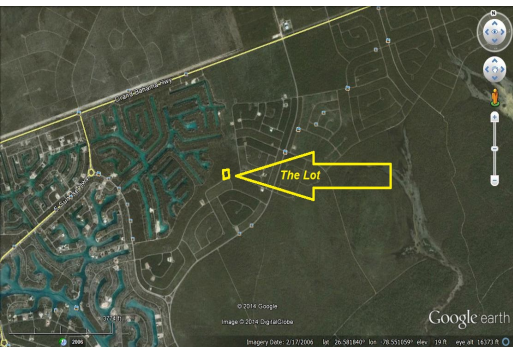
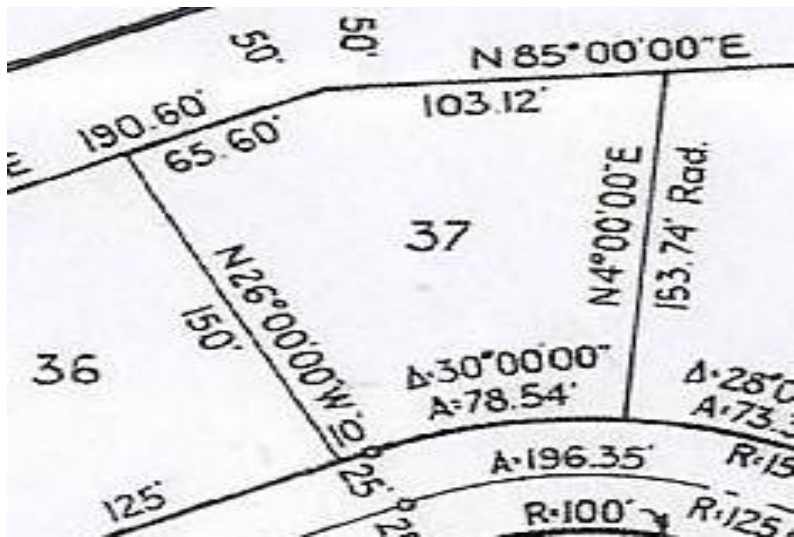


# Windermere Multi - Family Vacant Land



## Multifamily Lot

This Windermere lot is zoned multifamily and is just under half an acre in size. This is a good area for future investment. Call Helena Today for more information 242-727-4713...read more on our website.

- Lot Size: 19,417 sq ft
- Maint. Fees: \$150 per Year
- Subdivision: Windermere
- Paved Roads
- Great Investment Lot



Helena Parotti - Burrows  
 Phone: (242) 727-4713  
 helenab200@gmail.com



JAMES SARLES  
 REALTY

**\$25,000 ID# 8183 [View Online](#)**  
[www.sarlesrealty.com](http://www.sarlesrealty.com)