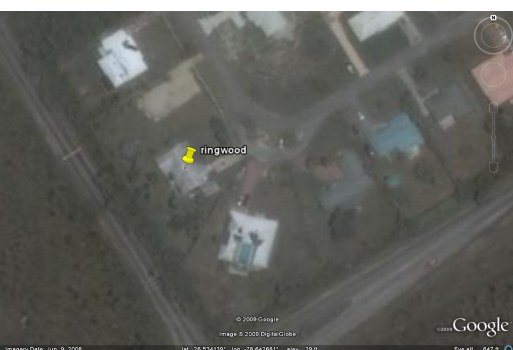


Ringwood Drive Home



Large family home in a quaint neighbourhood with bearing fruit trees. Call us to have a good look ar

This four bedroom home is nestled in this quiet neighbourhood and features a double car garage. The bedrooms and living room are carpeted while the rest of the home is tiled. The back garden is bordered with a 8' high solid wood fence 150' long. There are a large number of bearing fruit trees, including mangoes, limes grapefruit, avacado, cherry, sapodily, sugar apple, banana, almond, coconuts, cherry trees, just to mention a few. There are internally mounted iron bars on all window with 6 sets of automatic motion detector security lights mounted on the exterior of the house. 4 camera auto security camera system with monitor. A full alarm system-dual access with motion detector and auto dialer. The laundry room is between the garage and the house. The house also features a 3 ton Mitsu...read more on our website.

Bedrooms: 4
Bathrooms: 3.5
Living Area: 3550
Subdivision: Grasmere
Features: Gated
ideal family neighbourhood
huge gated garden



James Sarles

Phone: (242) 351-9081

info@sarlesrealty.com



\$325,000 ID# 1127 [View Online](#)
www.sarlesrealty.com