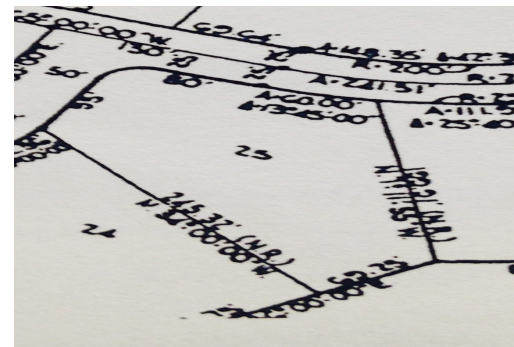


# Sizable Lincoln Park Land Fronting the Green Area



## Great price for the size of the lot!

This sizable lot of land is located In Lincoln Park Subdivision, just 10 minutes from all the best amenities such as shopping, schools, beaches, etc. Encompassing approximately 29,000 sq. ft. of land, this lot also has another great feature; it fronts what is known as the Green Area where no one can build therefore enabling you to have greenery/ park view opposed to immediate neighbor on three sides. Though there are no utilities on the lot at this time, there is a newly built neighboring home within about 3 to 5 future power poles. However, considering this very affordable price, one could install power and have a well pumped water quite easily. Call Ina for consultation and to schedule a viewing....read more on our website.

Lot Size: over 29,000 sq ft  
Maint. Fees: \$100/year  
Subdivision: Lincoln Park  
Sizable lot of land  
Fronting Green Area  
where no one can build



Ina Simmons

Phone: (242)351-9081  
inasimmons@gmail.com



**\$15,000 ID# 11691** [View Online](#)  
[www.sarlesrealty.com](http://www.sarlesrealty.com)