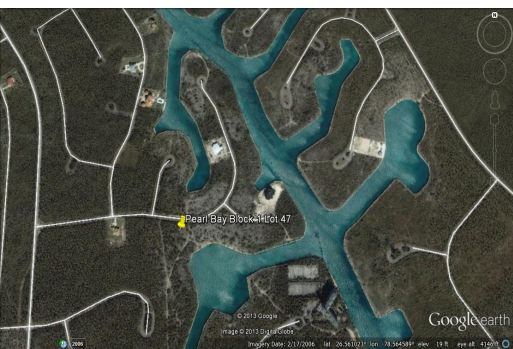
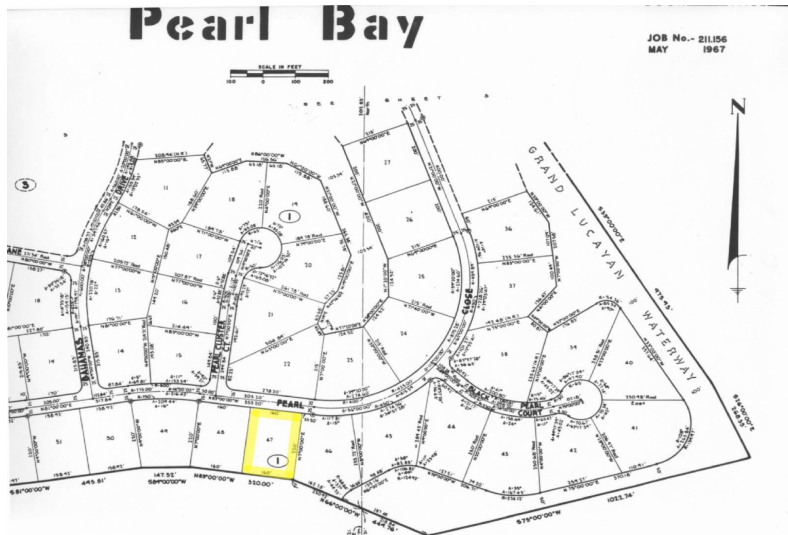
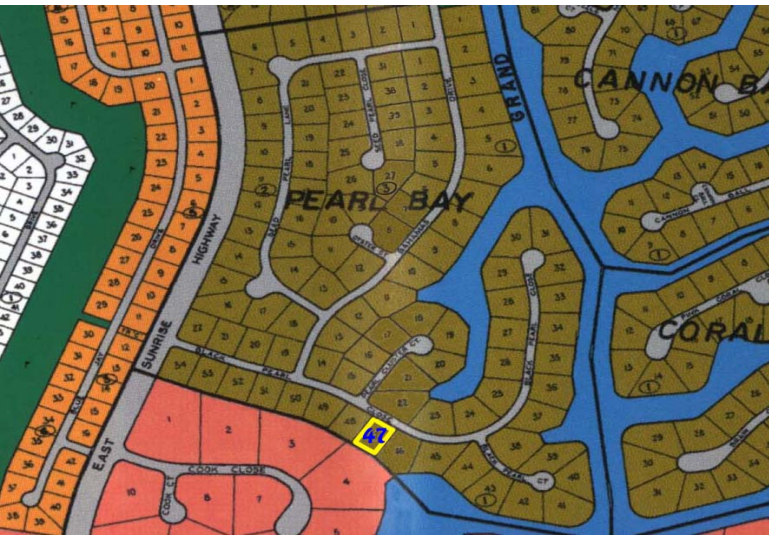


Multi-Family Land in Pearl Bay



Adjacent Lot also available for sale. Great Lot! Amazing Price!

Located on Black Pearl Close off East Sunrise Highway, this lot is situated in the Pearl Bay Subdivision and is an excellent location for your executive home. Just Minutes away from the Lucayan Waterway, beaches, schools and shopping this property has great potential. Property is a little over 3/4 acre in size measured at 160' x 220' with 35,200 sq ft. A Great lot in an amazing location! Adjacent lot also available for sale, see listing 1467....read more on our website.

Lot Size: 35,200 sq ft
 Maint. Fees: \$250.00 a year
 Subdivision: Pearl Bay



Ina Simmons

Phone: (242)351-9081
 inasimmons@gmail.com



**JAMES SARLES
 REALTY**

\$45,000 ID# 1466 View Online
www.sarlesrealty.com