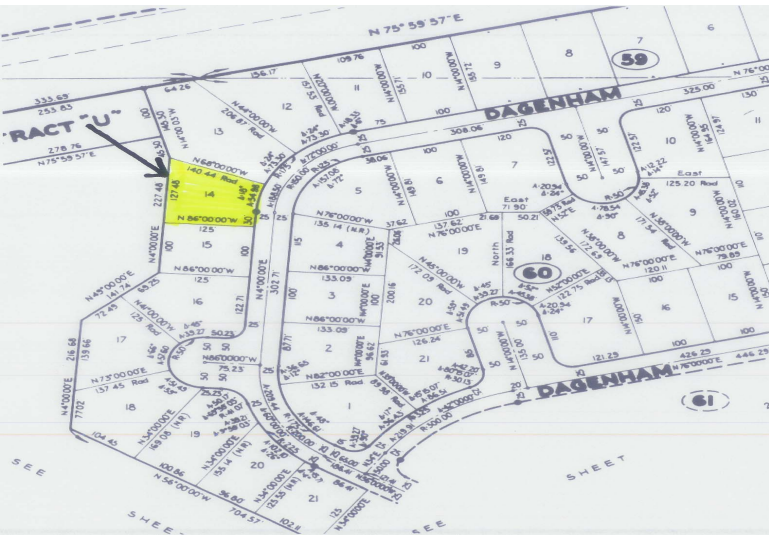


Emerald Bay Canal Lot



Single Family Canal Lot In Emerald Bay.

This canal lot is a single family lot that boasts 127 feet of canal front. Located off of Ingrave Drive, just over the Casurina Bridge....read more on our website.

Lot Size: 13,561 sq ft
Maint. Fees: \$ 450 per year
Subdivision: Emerald Bay
Features: Canal Front
On the Canal
127 Feet on the Canal !



Nikolai Sarles

Phone: (242)351-9081
nikolaisarles@gmail.com



\$120,000 ID# 2385 [View Online](#)
www.sarlesrealty.com