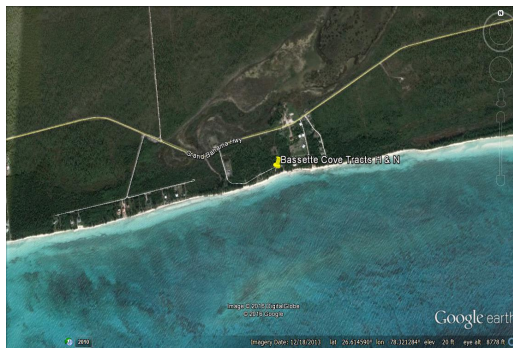


# Bassette Cove Beachfront Land



## TWO LOTS - Bassette Cove Spectacular Beachfront Land

This spectacular beach front property is on one of the finest beaches on the island located in the East End of Grand Bahama.

This area has open zoning. Tract H and N measure at 24,179 sq ft and offer 150 feet on the beach with spectacular views!

...read more on our website.

Lot Size: 24,179 sq ft  
Maint. Fees: -  
Features: Beach access,  
Ocean front  
Open Zoning  
150 feet on the Beach



James Sarles

Phone: (242) 351-9081  
jamesarlesrealty@gmail.com



**\$425,000 ID# 25873** [View Online](#)  
[www.sarlesrealty.com](http://www.sarlesrealty.com)