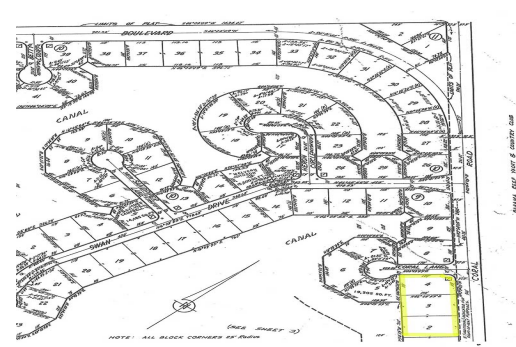
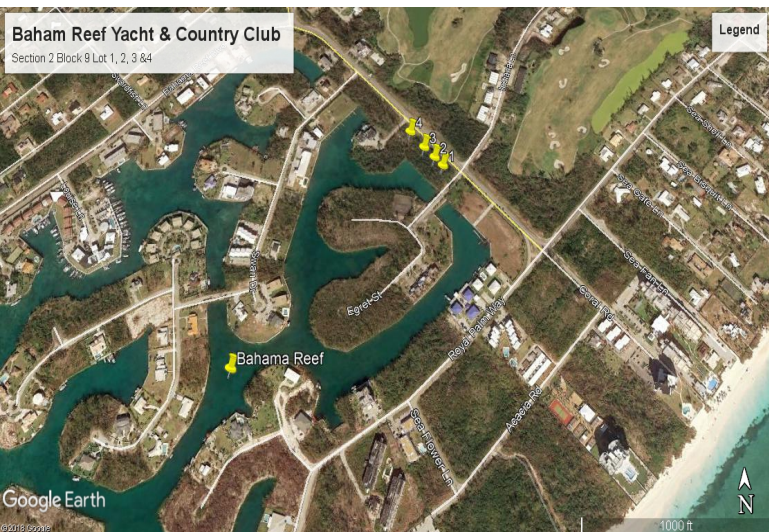


Bahama Reef Adjacent Canal Lots



Adjacent Canal Land

Located in Bahama Reef in very close proximity to the ocean, these lots boast canal frontage of over 300', and are close to the golf course and minutes away from the Grand Bahama attractions. The zoning on these lots allow you to develop anything from a luxury home to an exclusive high rise condominiums or even a small luxury hotel. This property is 1.79 acres and has 310 feet of water front to work with! Nikolai for more details and assistance. ...read more on our website.

Lot Size: 1.79 Acres
Maint. Fees: -
Subdivision: Bahama Reef
Yacht and Country Club
Features: Canal Front
4 adjacent lots
Over 300 feet on the
Water



Nikolai Sarles

Phone: (242)351-9081
nikolaisarles@gmail.com



\$340,000 ID# 35391 [View Online](#)
www.sarlesrealty.com