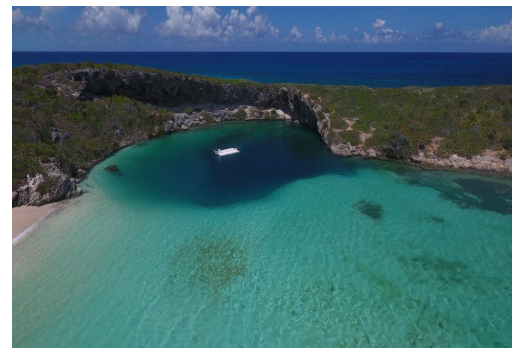
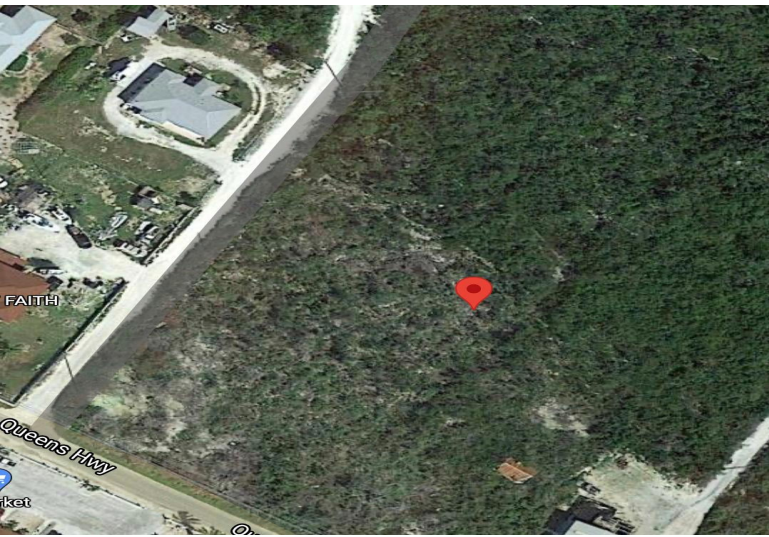


Lots/Acreage in Pettys



Lots/Acreage in Long Island

Long island is one of the most beautiful and untouched islands in the Bahamas. With steep rocky shorelines on the Northeast coast and expansive white sandy beaches on the Southeast of the island, Long Island has something for everyone. Noted for its caves, Dean's Blue Hole, the world's second deepest underwater sinkhole residents and guest can enjoy tranquil breezes, scuba diving, sailing, fishing, amazing island cuisine and local history. The island has two airports for local flights along with marinas for easy access. This twenty-five (25) acre tract in the district of Hamilton's, Long Island being part of a tract called Petty's Tract, can be your ideal spot for clean air, tranquility and your escape from the hustle and bustle of city living. Priced at US\$1.8M....read more on our website.

Bedrooms: 0
Bathrooms: 0
Lot Size: 1089000
Living Area: 1089000
Subdivision: Pettys
Features: None



James Sarles

Phone: (242) 351-9081

info@sarlesrealty.com



\$1.800,000 ID# 44489 [View Online](#)
www.sarlesrealty.com