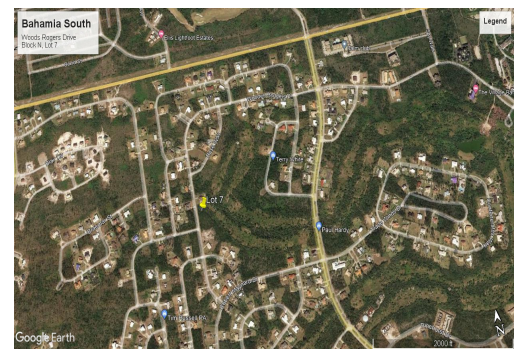
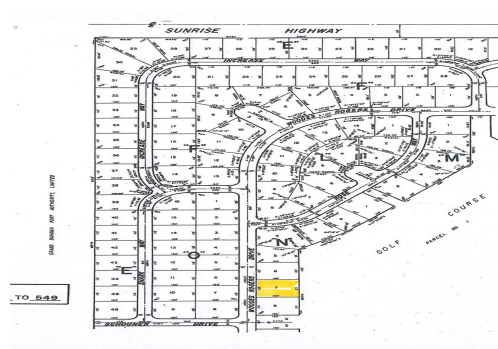
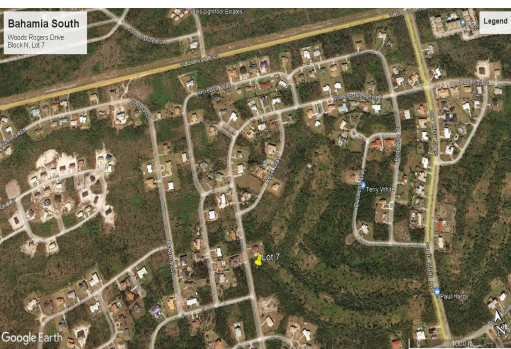
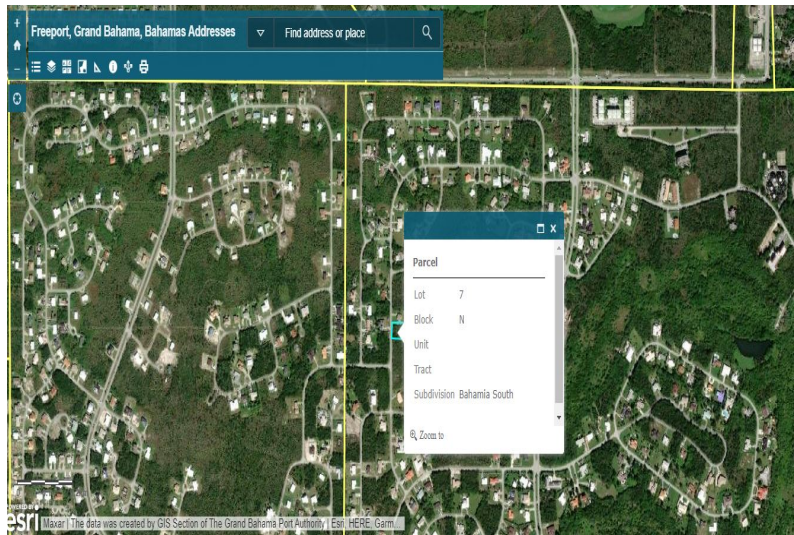
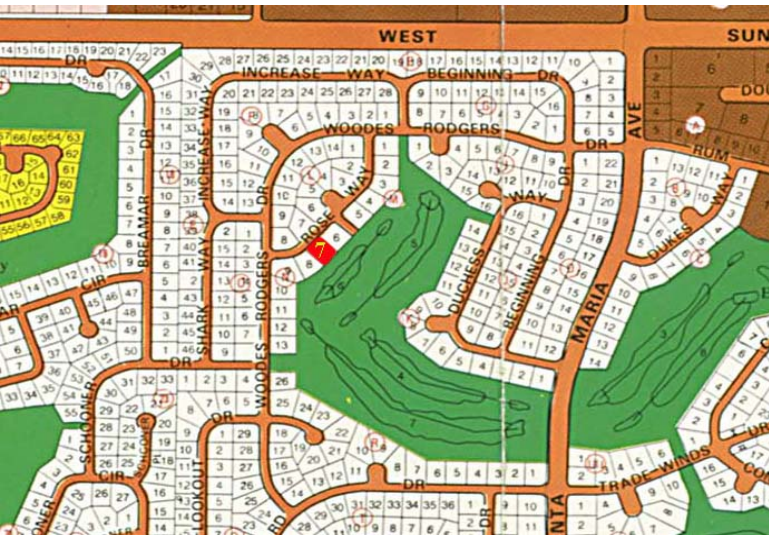


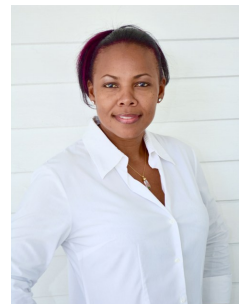
# Vacant Single Family Lot - Woods Roger Drive



## Affordable Lot In Bahamia South

Very desirable single-family lot in a quiet neighborhood. This area is less than 10 minutes to the nearest beach, downtown, schools, and the airport. Great investment for that first-time buyer or family....read more on our website.

Lot Size: 19,166 sq ft  
Maint. Fees: \$488  
annually  
Subdivision: Bahamia



Tiffany Smith

Phone: (242) 351-9081

kekris4@gmail.com



**\$20,000 ID# 45922** [View Online](#)  
[www.sarlesrealty.com](http://www.sarlesrealty.com)

Ph: (242) 351-9081 | Web: [www.sarlesrealty.com](http://www.sarlesrealty.com)