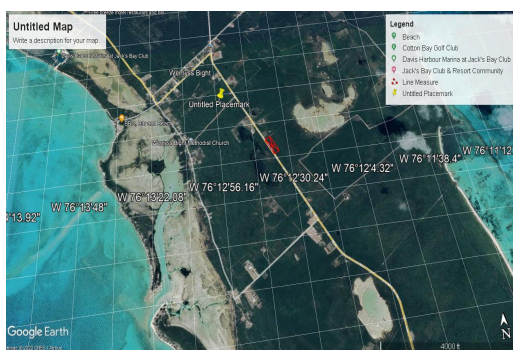
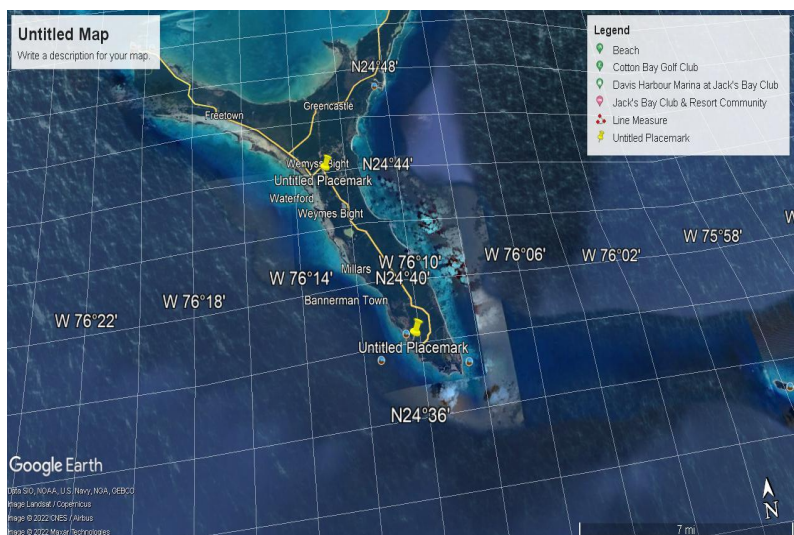


Lots/Acreage in Wemyss Bight



Lots/Acreage in Eleuthera

Location, Location, Location... Enjoy the peace and serenity of this 3 Acre property for sale located on the main Queen's Highway Road in the serene and rapidly developing community of Wemyss Bight, Eleuthera. Develop this slightly elevated, easily accessible property into single or multifamily projects and enjoy the benefits of being five minutes away from the Cotton Bay Club, Lighthouse Beach and the Disney Cruise Ship construction project...read more on our website.

Bedrooms: 0
Bathrooms: 0
Lot Size: 130680
Living Area: 130680
Subdivision: Wemyss Bight
Features: None



James Sarles

Phone: (242) 351-9081
info@sarlesrealty.com



\$395,000 ID# 47169 [View Online](#)
www.sarlesrealty.com