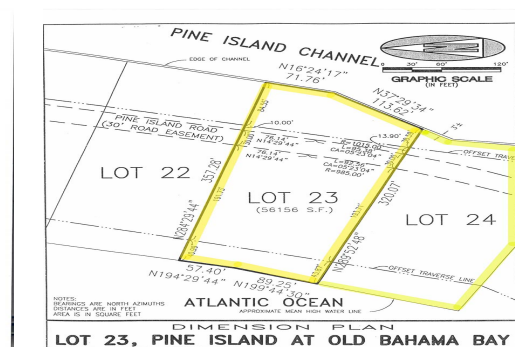
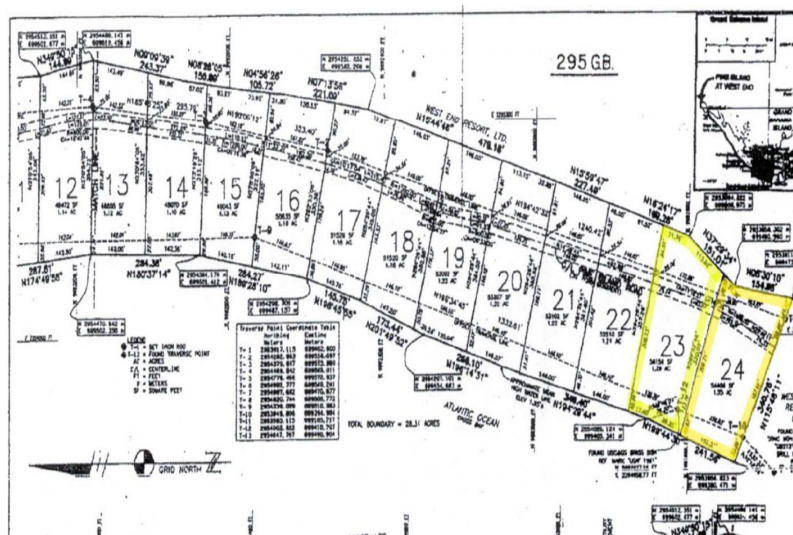
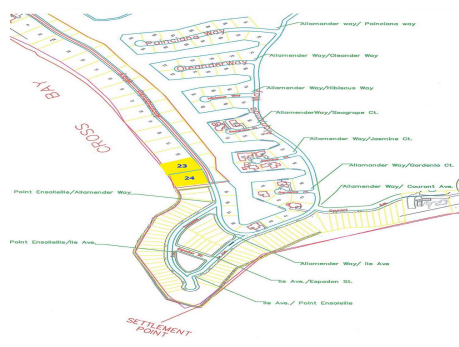


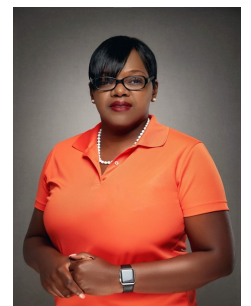
# Pine Island Double Lots



## Pine Island Doub Lots

The 150 acres that make up Old Bahama Bay have been designed to include everything you want in a tropical paradise. Old Bahama Bay has an oceanfront resort with 47 open suites, a 200-slip marina, and a new customs House featuring fine dining with panoramic views on the second floor and an indoor-outdoor lounge on the first level. There are many outstanding features that make Old Bahama Bay an ideal choice for your second residence or vacation home. And if you're a yacht owner, you'll truly appreciate that every home site has its own private dock. The most amazing area of Old Bahama Bay is Pine Island. Each of the 24 one-acre lots on this site offers 145 feet of ocean front 145 of dockage along a private 8 foot deep canal....read more on our website.

Lot Size: 2.5 Acres  
Maint. Fees: \$868 Monthly  
Subdivision: West End /  
West Grand Bahama  
Over 300' on the Water



Shelly Gardiner

Phone: (242)351-9081  
gardinershelly@gmail.com



**\$1,400,000 ID# 47246** [View Online](#)  
[www.sarlesrealty.com](http://www.sarlesrealty.com)

Ph: (242) 351-9081 | Web: [www.sarlesrealty.com](http://www.sarlesrealty.com)