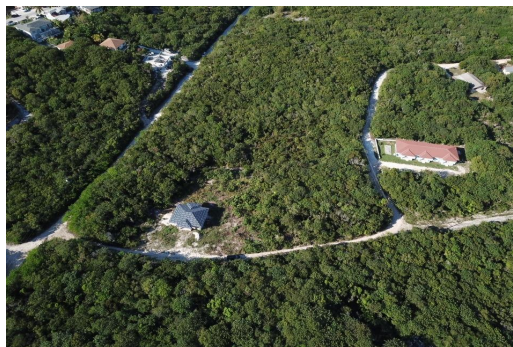


Lots/Acreage in Bahama Sound



Lots/Acreage in Exuma & Exuma Cays

Level single-family lot located in Bahama Sound 18, Silver Perch Lane is an unpaved road, just off the Queens Highway with power available just across from the lot. Bahama Sound 18 is centrally located: 20-minute drive from the George Town airport, a 2-minute drive from the Grocery, Liquor, Pharmacy & Hardware Stores in Hoopers Bay, and 5-minute drive into George Town. There is also public access to 3 beautiful beaches within 2 miles. Great Exuma enjoys daily flights from Atlanta, Charlotte, Ft. Lauderdale, Nassau, and Miami....read more on our website.

Bedrooms: 0
Bathrooms: 0
Lot Size: 10000
Living Area: 10000
Subdivision: Bahama Sound
Features: None



James Sarles

Phone: (242) 351-9081

info@sarlesrealty.com



\$32,000 ID# 48462 [View Online](#)
www.sarlesrealty.com