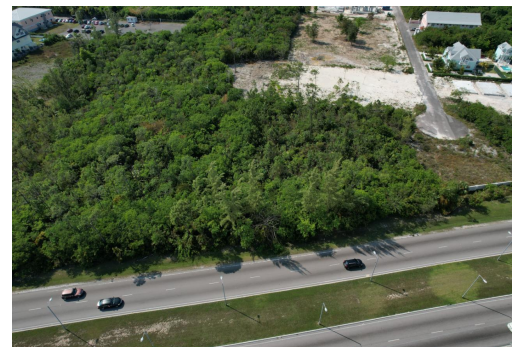


Lots/Acreage in West Bay Street



Lots/Acreage in New Providence/Paradise Island

Prime multi-family development just off West Bay Street. This property measures 35,292 square feet and is zoned multi-family for multi-unit development. The savvy investor can build for rental purposes, to sell immediately or both. The community is fully gated and features underground utilities. Just off West Bay Street, the airport is a convenient 7 minutes away. Other nearby amenities include 5 minute's walk to the beach, shopping, all day dining, coffee shops, and gym....read more on our website.

Bedrooms: 0
Bathrooms: 0
Lot Size: 35292
Living Area: 35292
Subdivision: West Bay Street
Features: None



James Sarles

Phone: (242) 351-9081

info@sarlesrealty.com



\$975,000 ID# 49310 [View Online](#)
www.sarlesrealty.com