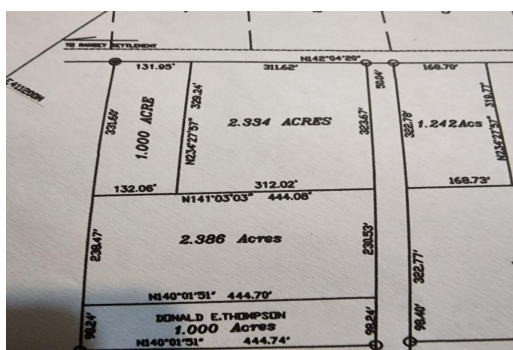


# Lots/Acreage in George Town



## Lots/Acreage in Exuma & Exuma Cays

This is an extraordinary chance to secure a piece of Exuma's exclusive commercial acreage! Feast your eyes on this cutting-edge investment opportunity: a remarkable 2.334-acre lot, perfectly positioned along the Queen's Highway, boasting breathtaking two-story ocean views! Location is key, and this remarkable acreage enjoys a prime spot merely five minutes away from the Georgetown Exuma airport. It offers a jaw-dropping 311 feet of highway frontage, presenting endless possibilities for upscale ventures catering to the affluent communities of Casa Del Mar Resort and Tar Bay which are 2 minutes away. The adjacent 1 acre parcel was just recently sold so act swiftly, and position yourself at the forefront of Exuma's thriving real estate market. Don't miss out on this extraordinary chance to sh...read more on our website.

Bedrooms: 0  
Bathrooms: 0  
Lot Size: 101669  
Living Area: 101669  
Subdivision: Jimmy Hill  
Features: None



James Sarles

Phone: (242) 351-9081  
info@sarlesrealty.com



**\$415,000 ID# 49596** [View Online](#)  
[www.sarlesrealty.com](http://www.sarlesrealty.com)