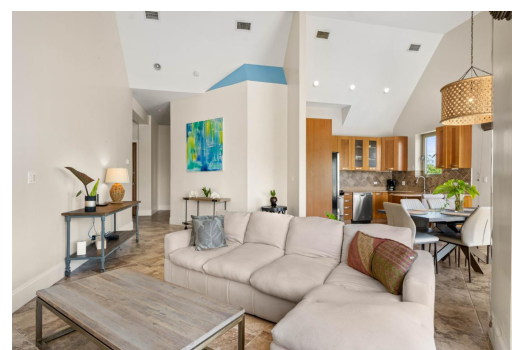
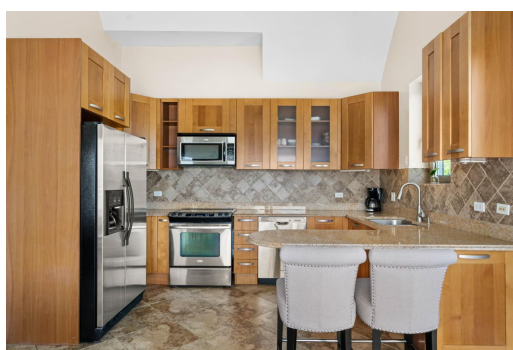


Condo in Love Beach



Condo in New Providence/Paradise Island

Overlooking the beautiful sandy beach of Love Beach, this penthouse condominium offers an open plan living allowing for refreshing cross breezes and soft light to flow through every room. The professional-grade kitchen is fully equipped with granite countertops, and an expansive balcony for relaxing with a view. Three bedrooms with en-suite baths include high ceilings highlighting the sweeping views of the spectacular clear blue ocean. The expansive beachfront master suite is complete with floor-to-ceiling views and a large walk-in closet and jacuzzi bathtub. This 2,060 sq. ft. home features, hurricane impact windows and shutters, a laundry room and generator. The Love Beach Walk community is situated on the western end of New Providence, provides convenient access to the international air...read more on our website.

Bedrooms: 3
Bathrooms: 3
Lot Size: 2060
Living Area: 2060
Subdivision: Love Beach
Features: Swimming Pool,
Furnished, Hurricane
Windows



James Sarles

Phone: (242) 351-9081
info@sarlesrealty.com



\$799,000 ID# 49796 [View Online](#)
www.sarlesrealty.com