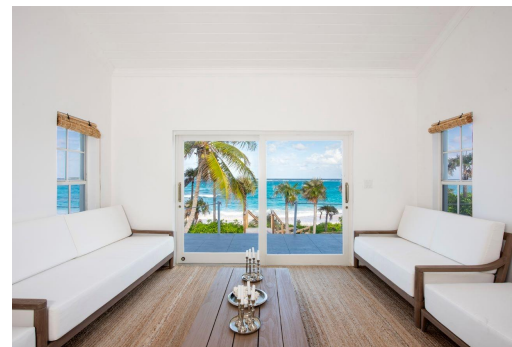


Single Family Home in Savannah Sound



Single Family Home in Eleuthera

C-Breeze is a newly renovated luxurious 4 bedroom 3 bathroom contemporary designed home, with 2,000 square footage of living space, situated in the world renowned Double Bay community on the Island of Eleuthera, the Jewel of The Bahamas. This spectacular and beautifully appointed beach house offers unobstructed Azure ocean views from every room in the house and has direct access on one of the finest beaches in The Bahamas. The home is finished and furnished with all sleek contemporary white and neutral design and furnishings with an island chic feel. You will encounter a spacious and inviting open plan living room, dining room and kitchen with high ceilings throughout. Features included split system air conditioning throughout and hurricane impact resistant doors and windows all of which o...read more on our website.

Bedrooms: 4
Bathrooms: 3
Lot Size: 51357
Living Area: 2000
Subdivision: Savannah Sound
Features: Impact Windows, Furnished, Hurricane Windows



James Sarles

Phone: (242) 351-9081
info@sarlesrealty.com



\$2.995,000 ID# 49991 [View Online](#)
www.sarlesrealty.com